

# Global Culture and its Discontentments

Kuenzelsau, Jan 16, 2015

Michael Schindhelm



## Geography

Located on the Southern shore of the Persian Gulf

Second largest of the seven Emirates of the United Arab Emirates

2.5 hours from Mumbai  
4.5 hours from Moscow  
6 hours from Paris  
7 hours from London  
7.5 hours from Beijing



## Economy 2001 - 2007

GDP (2007) **\$ 73 bn**  
Average Annual Growth **13.4 %**  
(2001-2005)

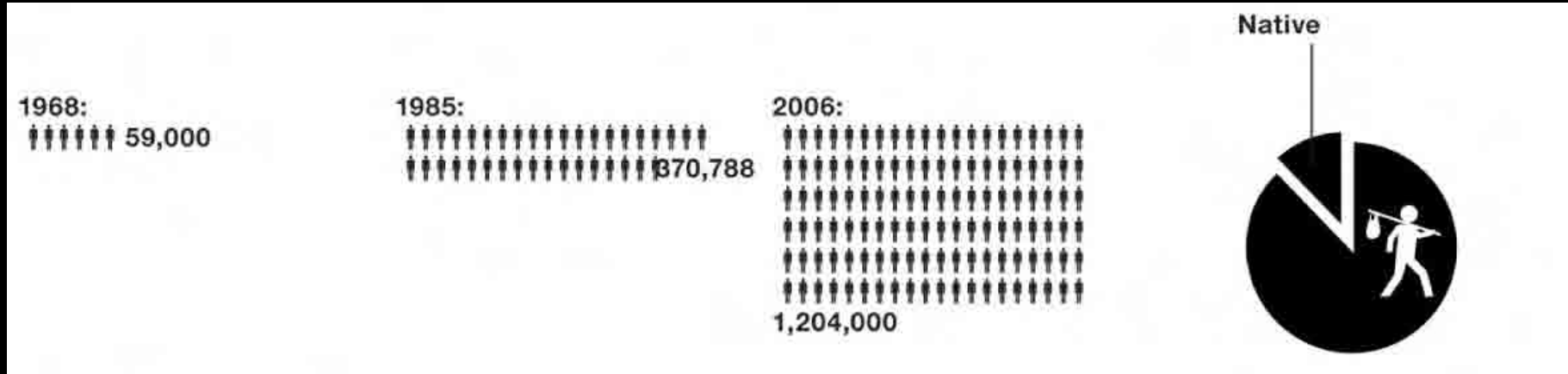
### GDP by Sector

**Services 73.6 %**  
(trade, construction, transport, storage & communication, real estate & business, restaurants & hotels, social & personal services, domestic services)

**Manufacturing 13.1 %**  
**Oil & Gas 5.1 %**  
**Other 8.2 %**

**2,369** buildings completed in 2007

World's largest building to be completed in 2009



## Population

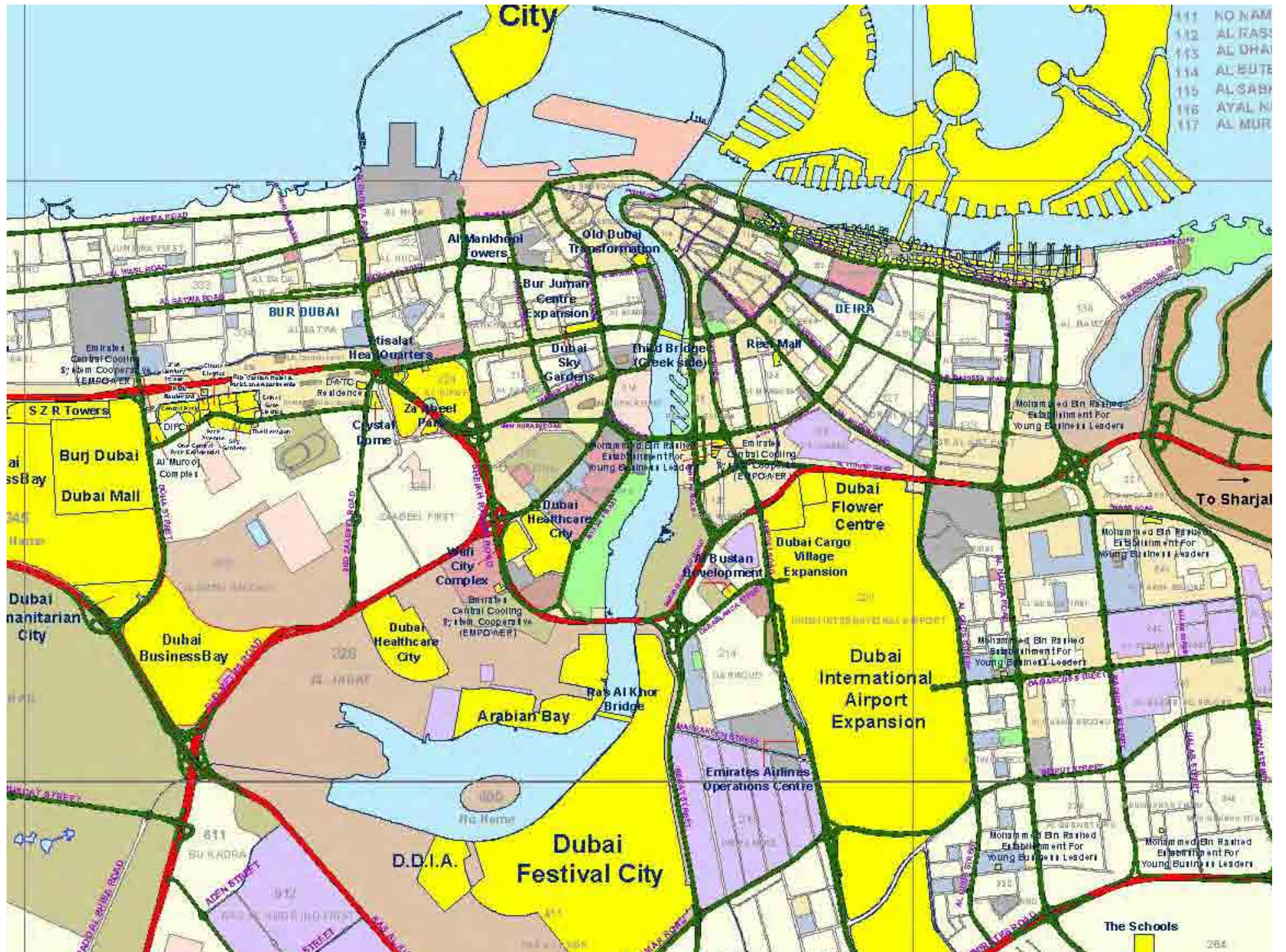
1,600,000 (2008) – set to increase to 3.5 million by 2010

94 % expatriates – from over 200 nations

Arabic and English – Hindi, Urdu, and most European languages also widely

Muslim, Hindu and Christian, various others





## Early 1900s

- The Creek lacked fertile land, so settlers looked to the sea
- Livelihood based on fishing, pearling & sea trade
- Unlike Persian counterparts, settlers welcomed traders
- Dubai offered basic facilities for trade & free enterprise for merchants who left Iran's Lingah

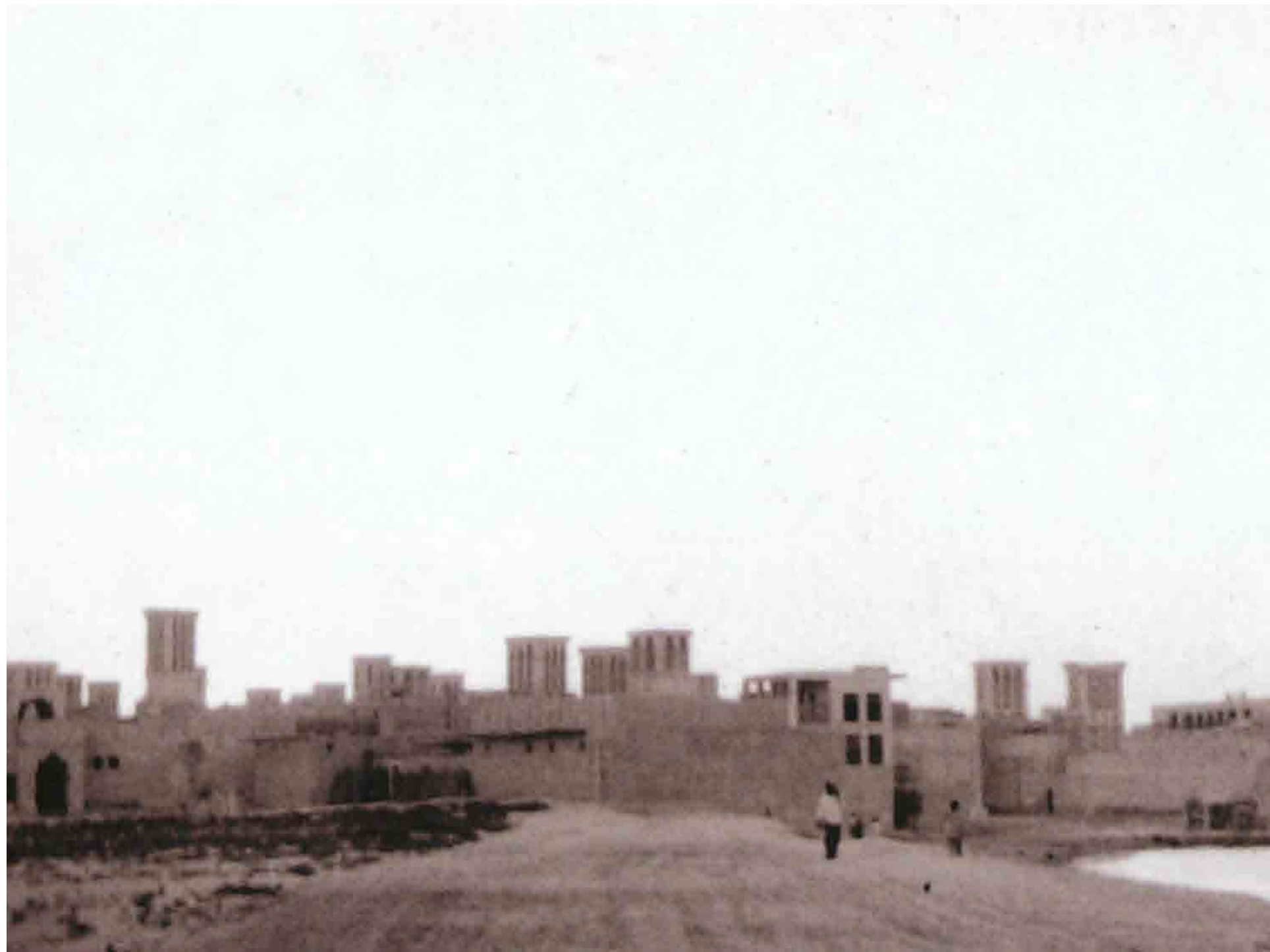




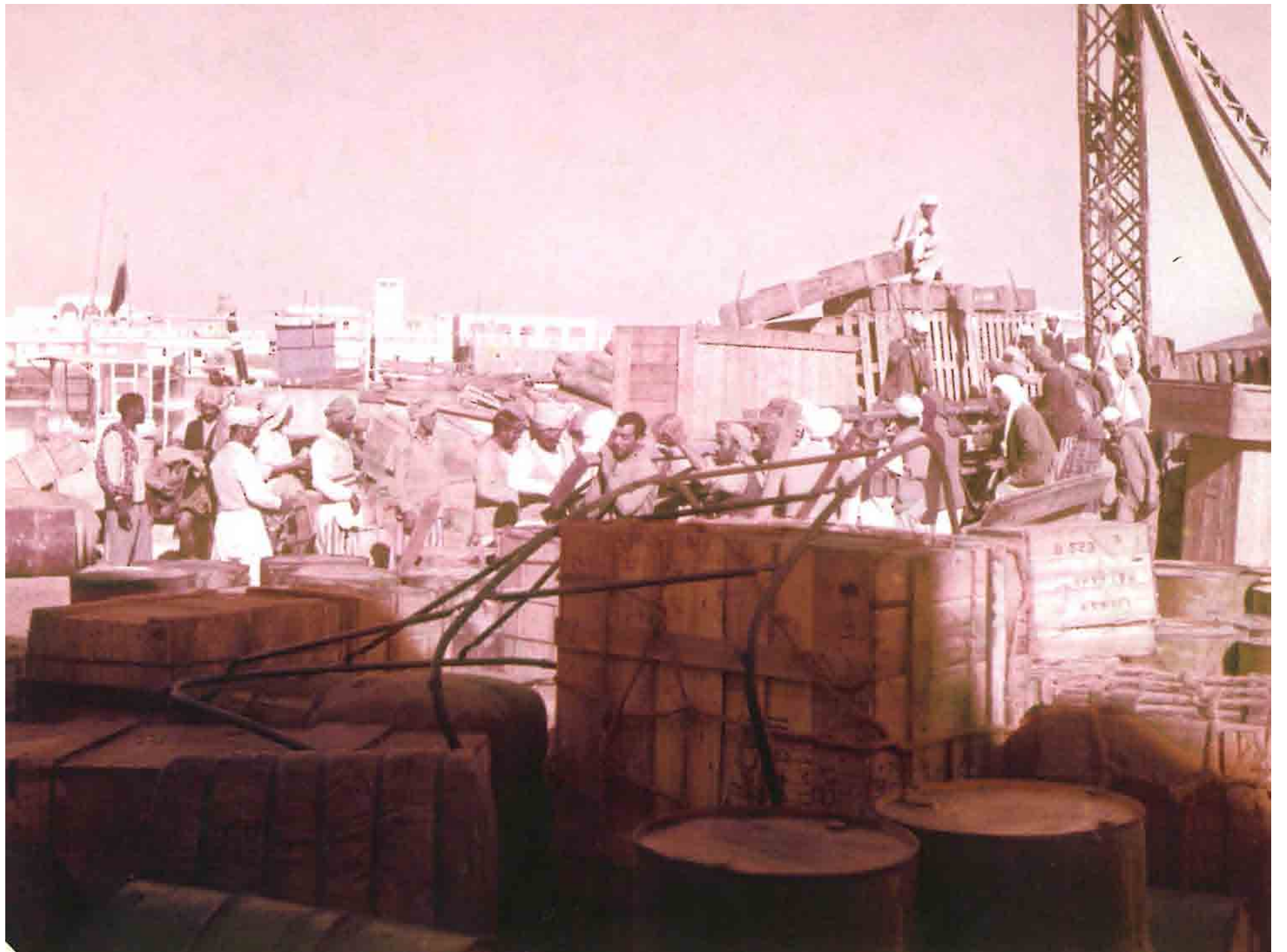
















## Economy 2012

UAE GDP 2012 (estimated)  
**\$360bn**

GDP in the UAE expanded 4.90  
percent in 2012 from the  
previous year

Gross External Debt 2012  
**\$ 158.9 bn**

government spending 2012  
**\$ 11.4 bn** (from \$ 7.2 bn in 2008)











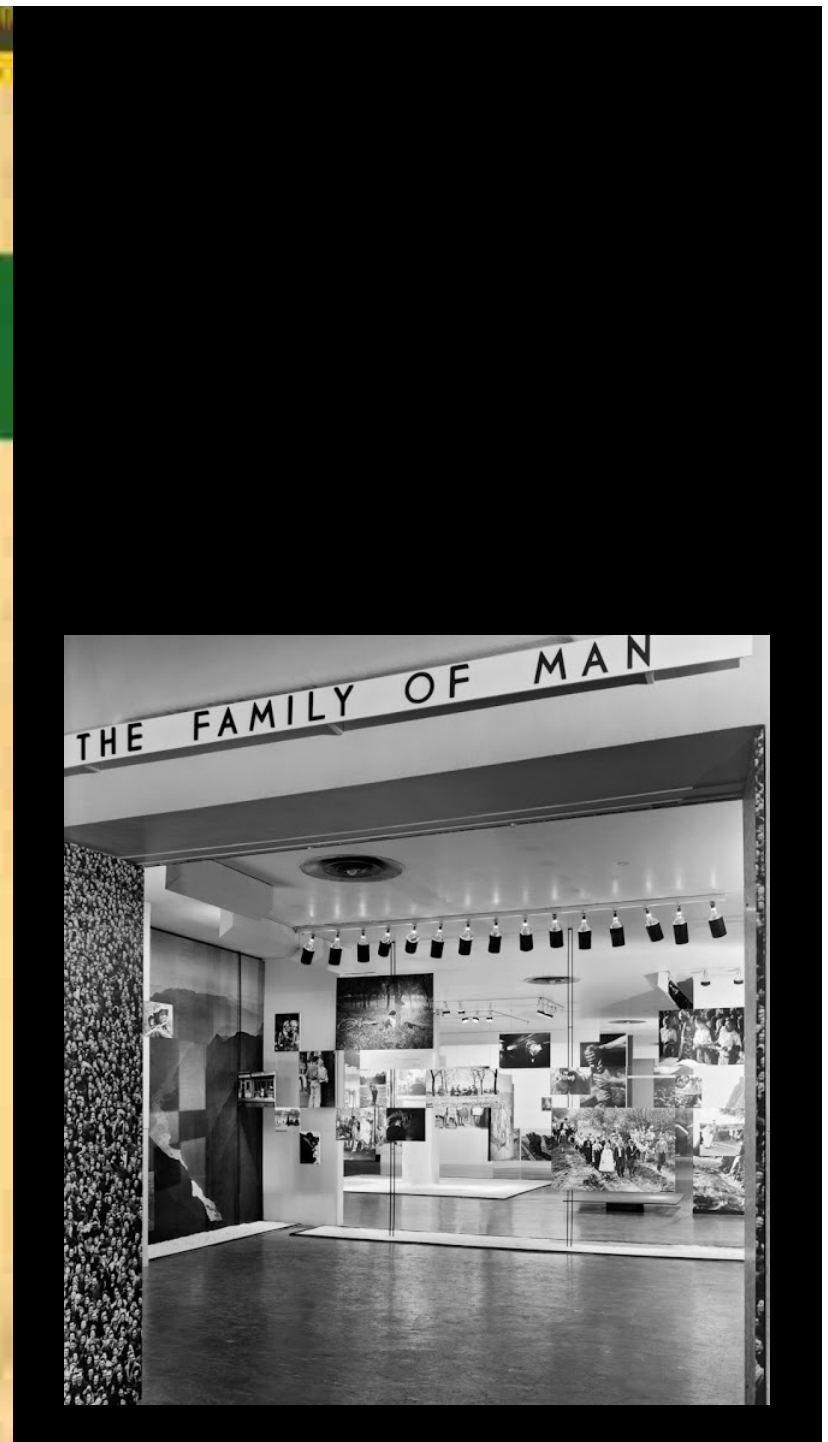
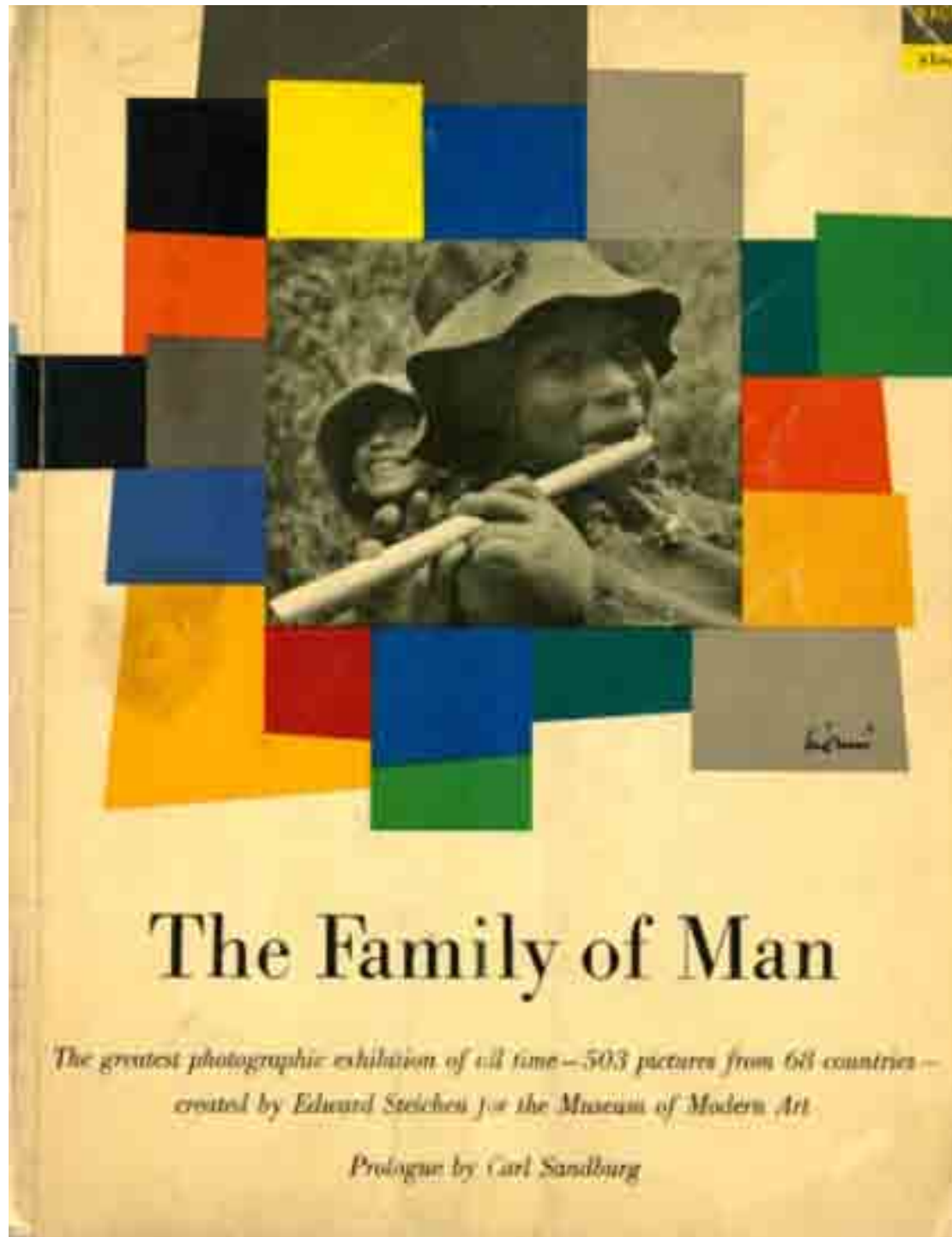




# Il Milione













# LIFE

MYSTERY OF CZAR'S DAUGHTER,  
A HIT PLAY, A REAL LIFE DISCOVERY

'WH. SPERREK,' THE UNUSUAL TEAM  
OF WATSON AND MARTIN

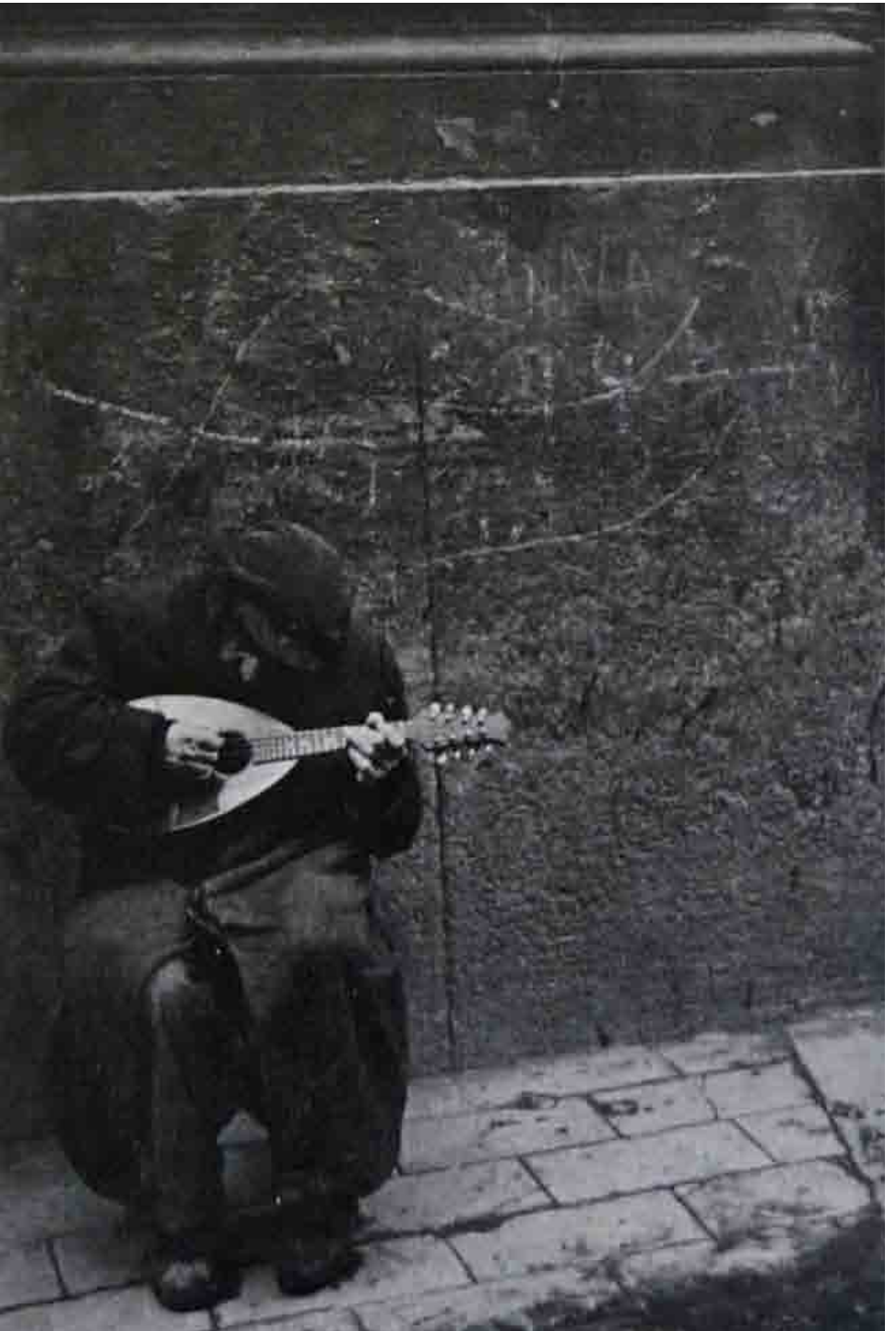
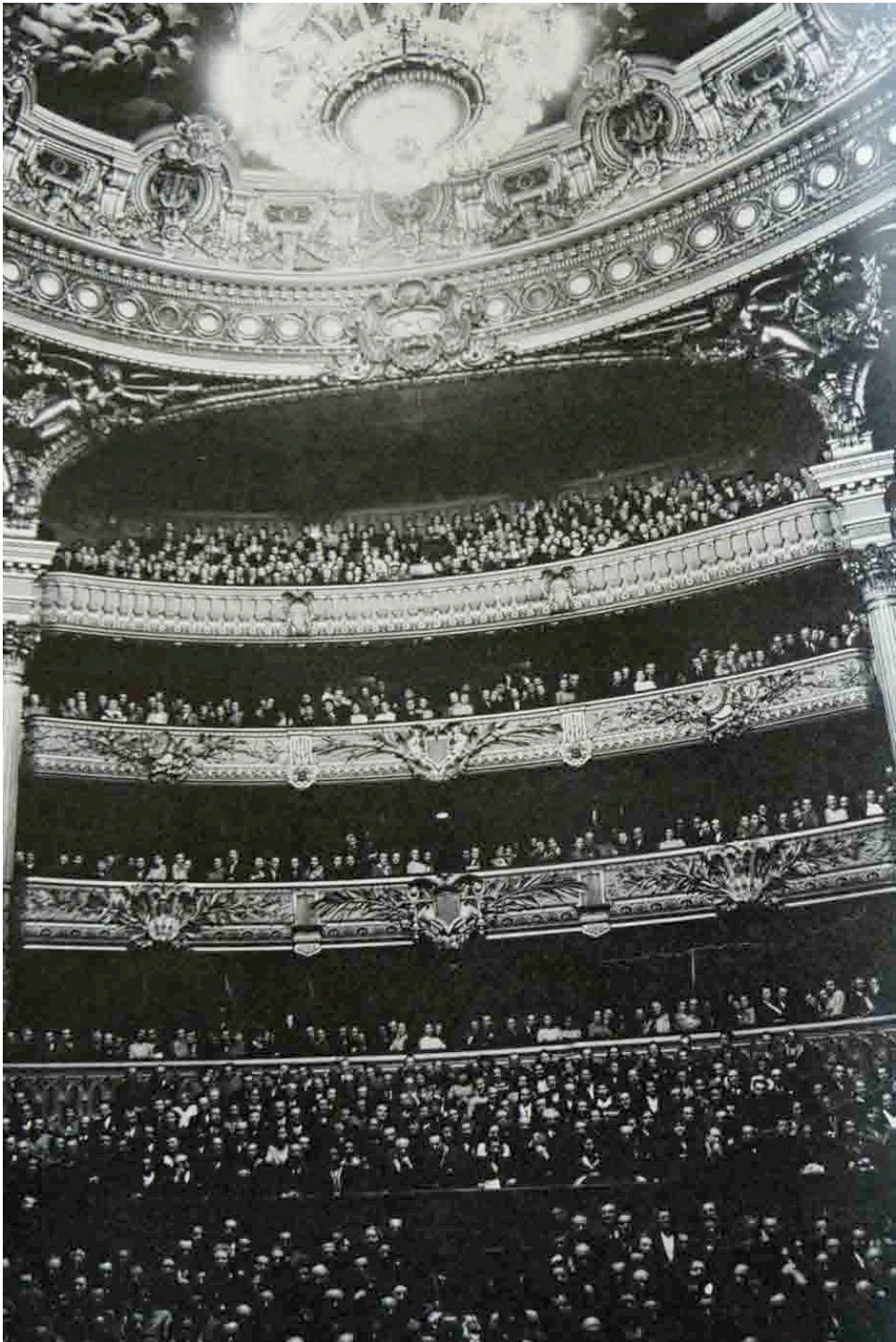


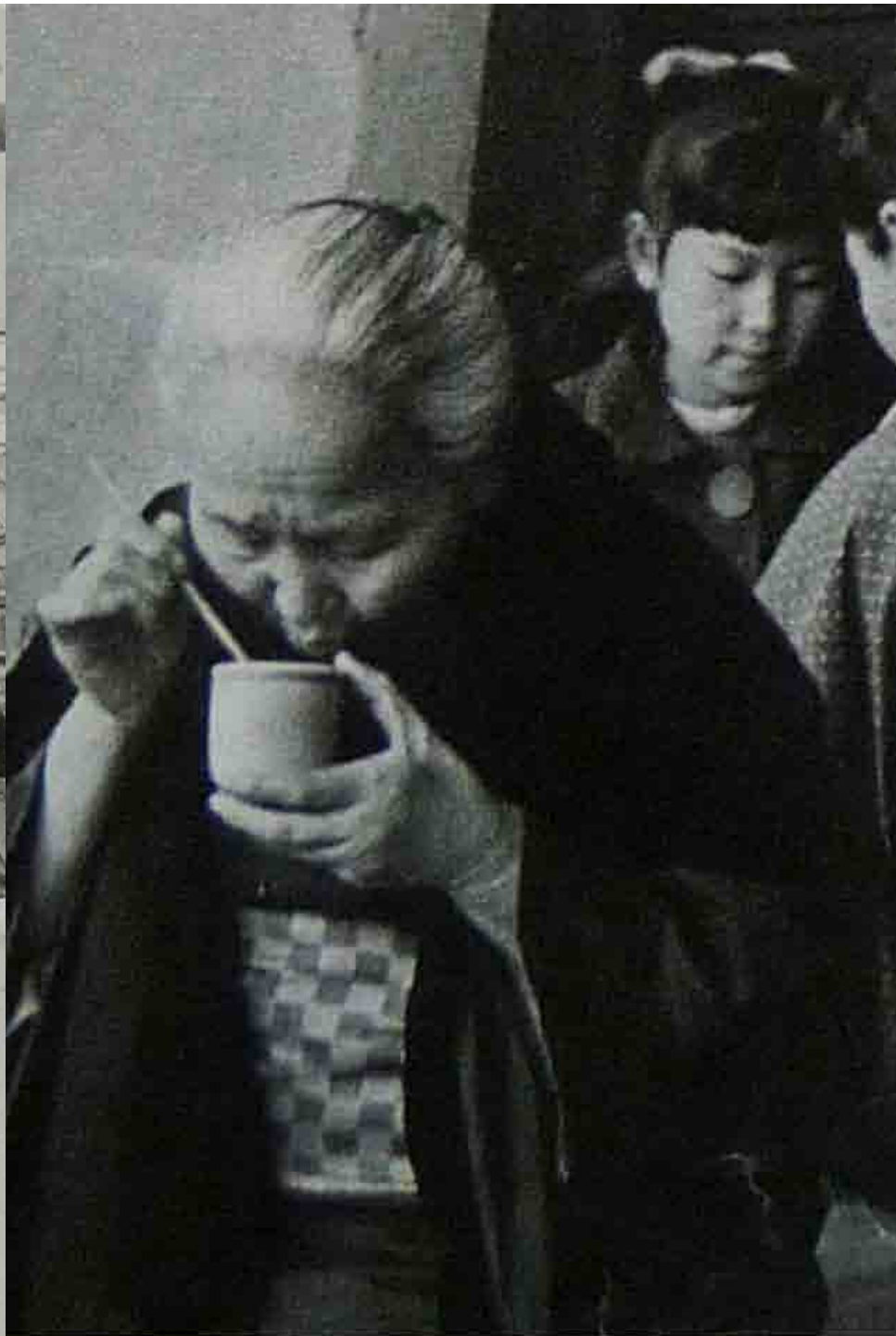
THE FAMILY  
OF MAN  
LIFE'S FIRST PHOTO MOUNT

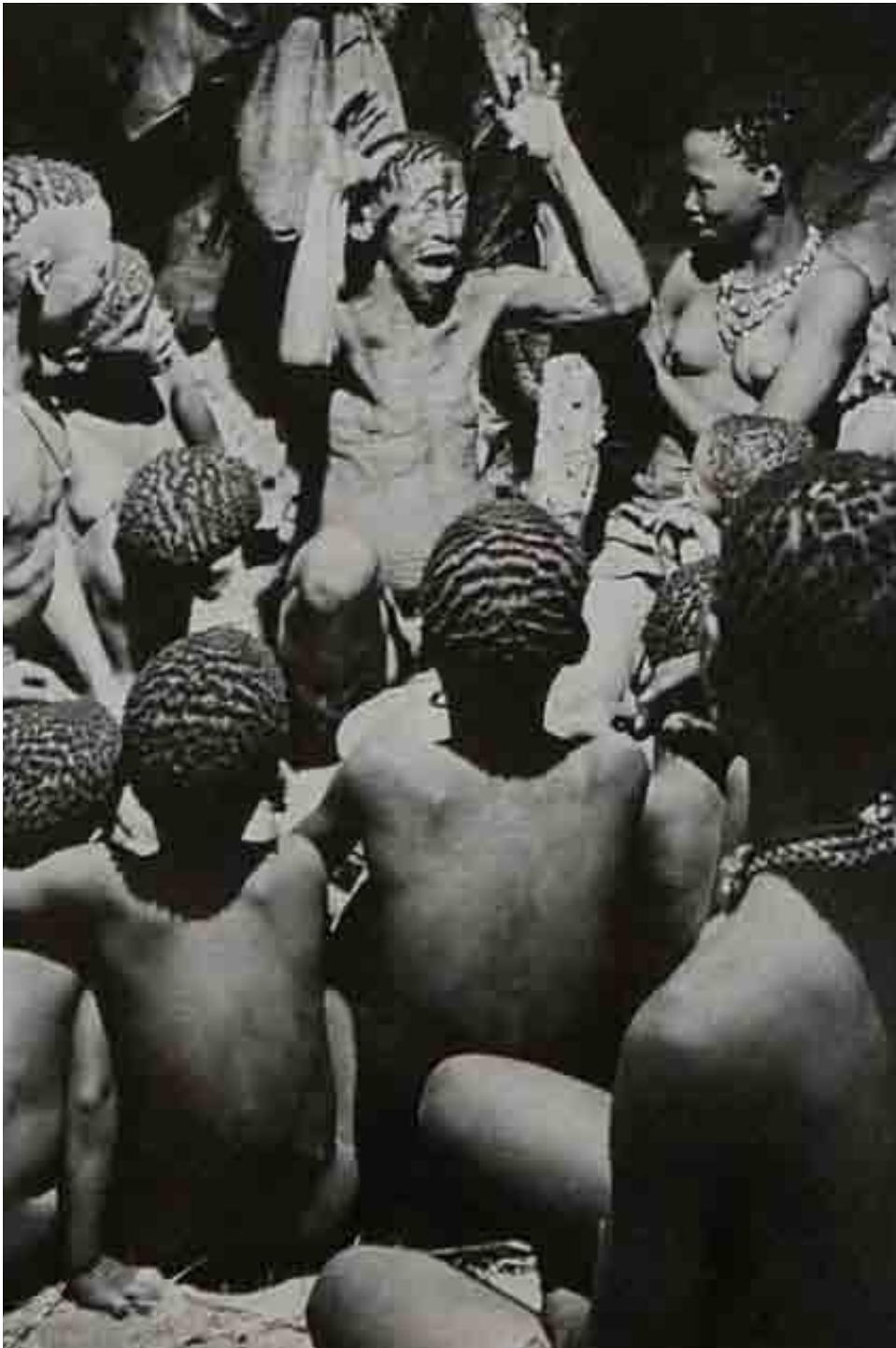
20 CENTS

FEBRUARY 14, 1953

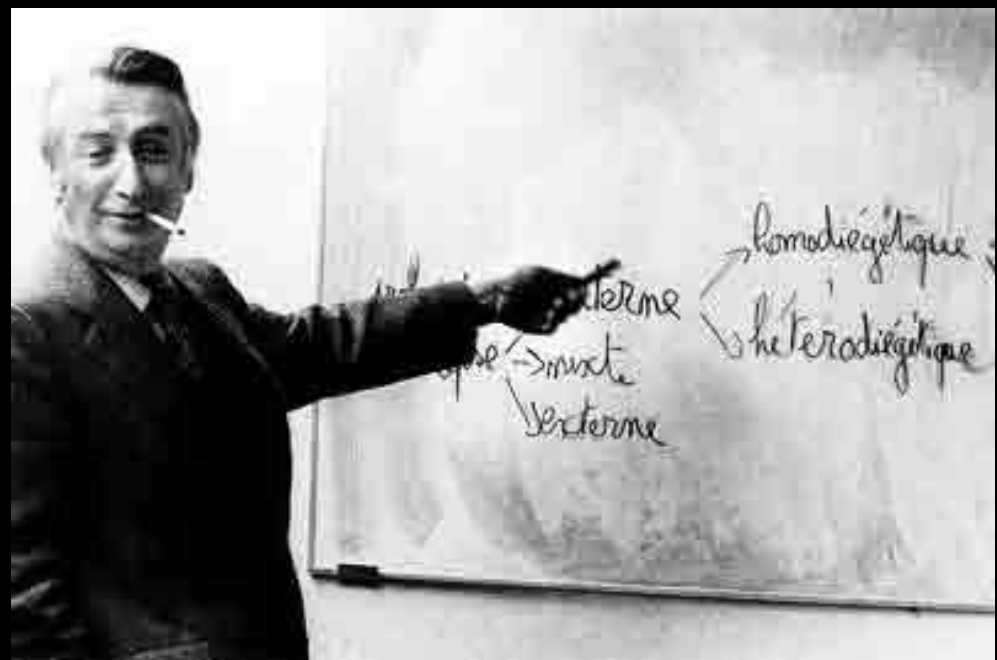








# ROLAND BARTHES MYTHOLOGIES







THE  
END OF  
HISTORY  
AND THE  
LAST MAN



FRANCIS  
FUKUYAMA  
WITH A NEW AFTERWORD

"Awesome . . . a landmark . . .  
profoundly realistic and important . . .  
supremely timely and cogent . . . the first book  
to fully fathom the depth and range of the  
changes now sweeping through the world."  
—George Gilder, *The Washington Post Book World*

*"What we may be witnessing is not just the end of the Cold War, or the passing of a particular period of post-war history, but the end of history as such: that is, the end point of mankind's ideological evolution and the universalization of Western liberal democracy as the final form of human government."*



CHINA IN 2022 | ALICE ON 'FORMALISTS' | HOLIDAY MOVIES

DECEMBER 3, 2021  
**Newsweek**



**HOW GREAT  
POWERS  
FALL**

**STEEP DEBT, SLOW GROWTH,  
AND HIGH SPENDING KILL EMPIRES—  
AND AMERICA COULD BE NEXT**

BY NIALL FERGUSON



The New York Times

# Sunday Review | The Opinion Pages

OPINION

## America the Innovative?



Post Typography

By EAMONN FINGLETON  
Published: March 30, 2013

DUBLIN

CONGRESS might be at loggerheads, the unemployment rate might be too high and America's infrastructure might be crumbling — but Americans of all political viewpoints comfort themselves with the notion that at least they lead the world in high technology and always will.

It's a pleasing, convenient idea. China can't outrun the United States, because it's not creative enough. It's authoritarian. Democracy is central to innovation, according to this comforting scenario.

Although America has accounted for a sizable share of all technological innovations that have shaped our modern world, the wider historical evidence is disappointing for anyone who thinks political freedom is a fundamental precondition for innovation.

Few of the most creative societies of the ancient world were free. Certainly not Mesopotamia or Egypt. As for the spectacular creativity of early modern Europe, this somehow flourished alongside bloodcurdling efforts at mind control. More recently, both Nazi Germany and the Soviet Union, with authoritarian cultures, punched well above their weight in innovation.

 FACEBOOK


 TWITTER

 GOOGLE+

 SAVE

 E-MAIL

 SHARE

 PRINT

 REPRINTS

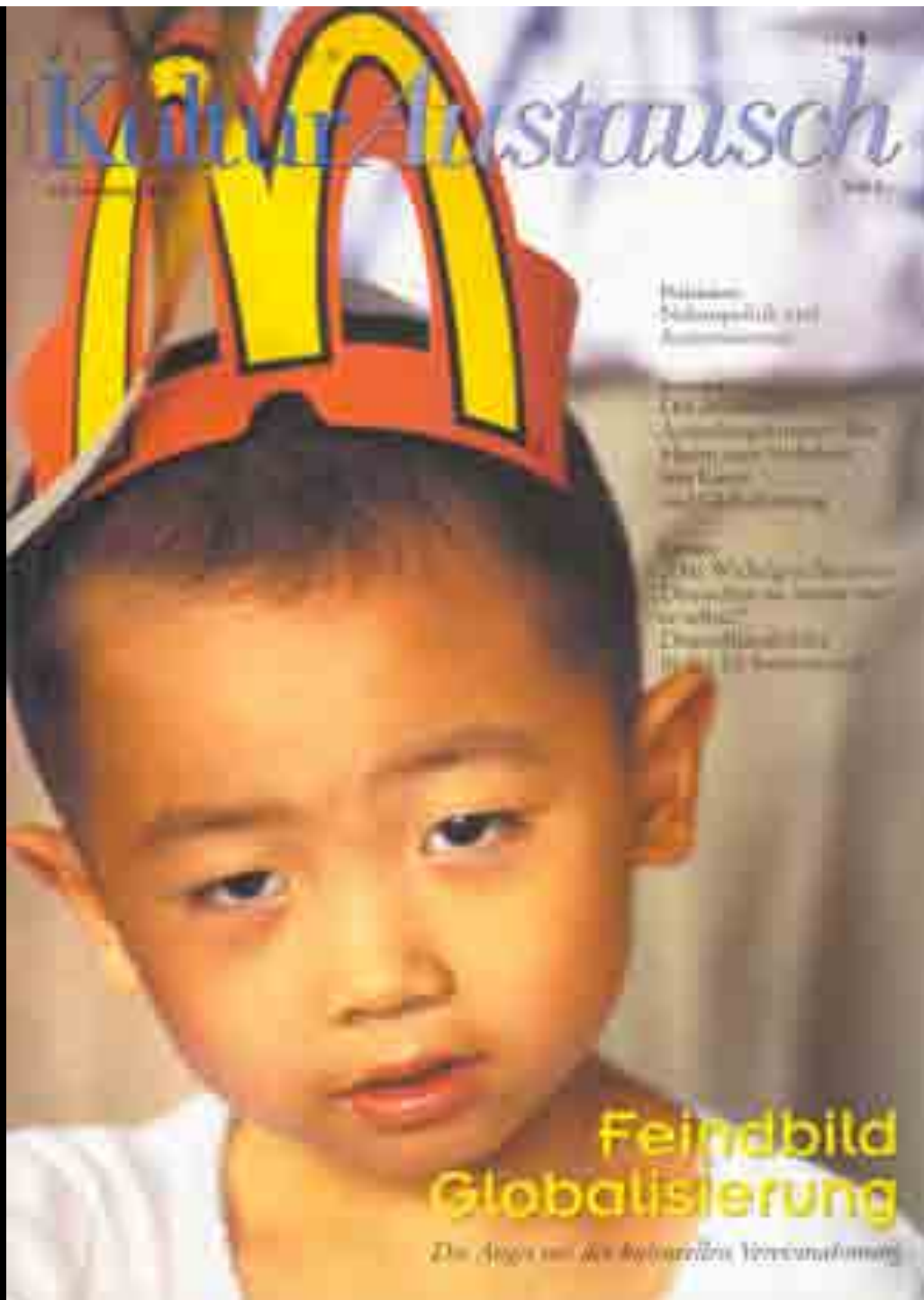




Take a walk down the street and see where this is going. You no longer feel like you are living in your own country. There is a battle going on and we have to defend ourselves. Before you know it there will be more mosques than churches!

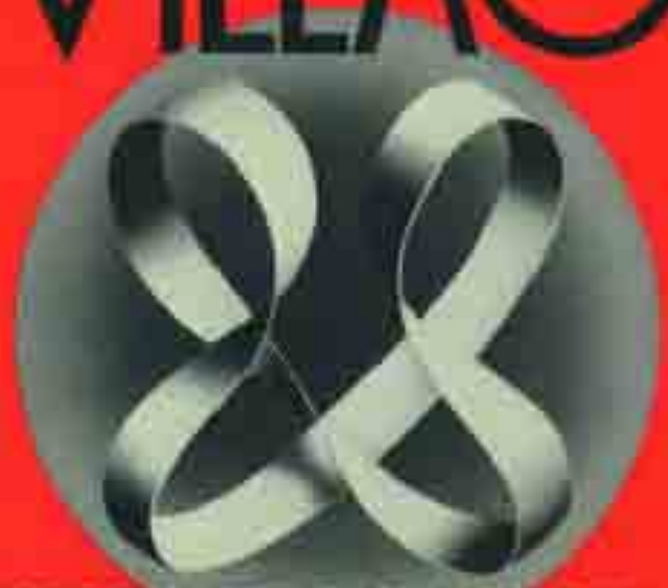
(Geert Wilders)

[izquotes.com](http://izquotes.com)

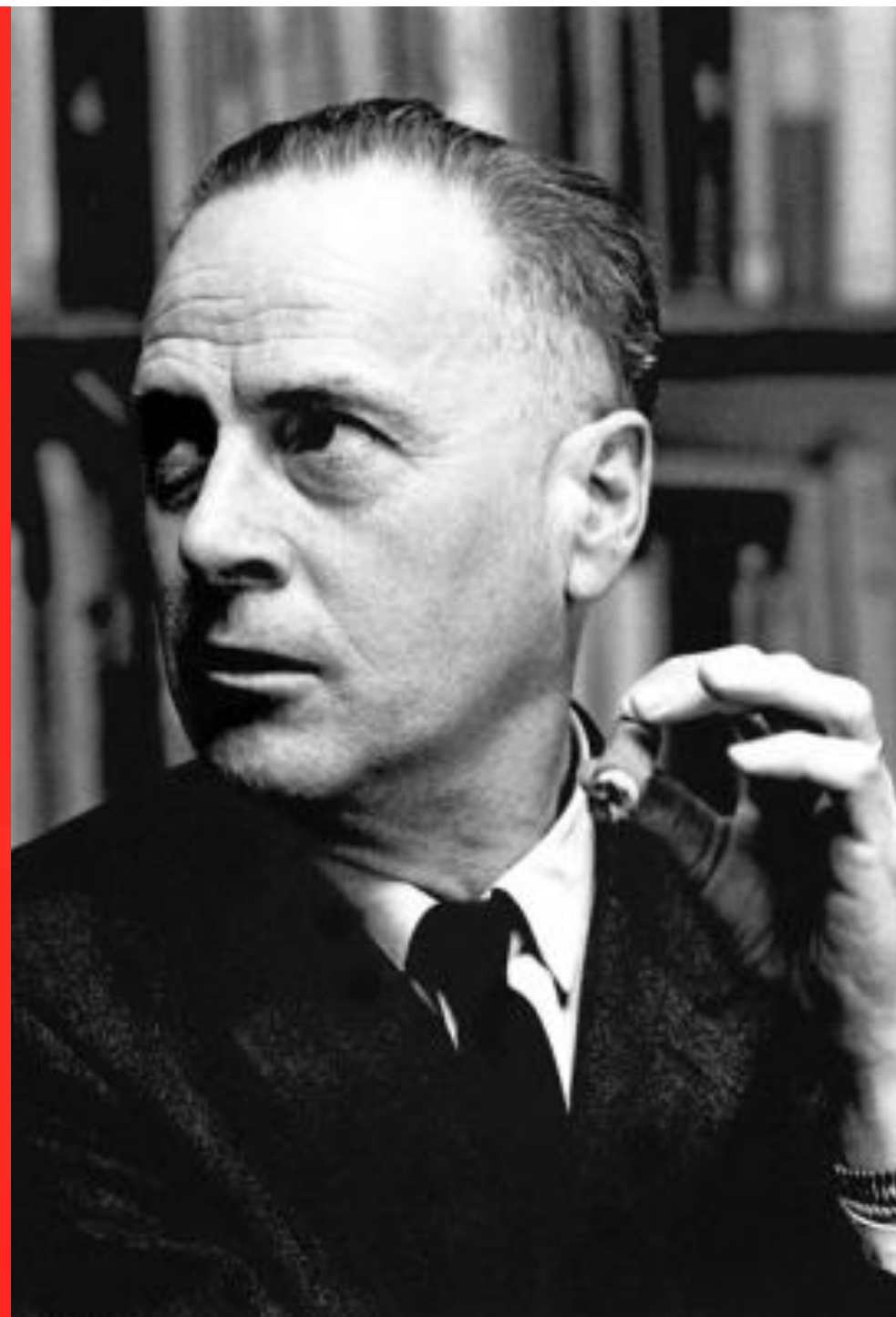


MARSHALL McLuhan  
& BRUCE R. POWERS

THE  
GLOBAL  
VILLAGE



TRANSFORMATIONS IN WORLD LIFE  
AND MEDIA IN THE 21<sup>st</sup> CENTURY



# INVENTION OF SPACE CONTRACTING TECHNOLOGIES



1874



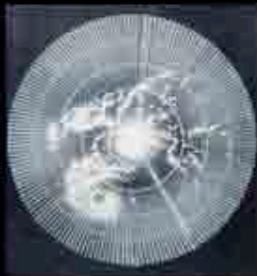
1889



1903



1927



1934



1969



1970



1969



2004







Schumann  
The Symphonies

Barenboim  
Staatskapelle Berlin















# INCEPTION





Any Name





# Architect Franchises

(WESTERN)

FRANK GEHRY

JEAN NOUVEL

ZAHA HADID

HERZOG & DE MEURON

NORMAN FOSTER

RENZO PIANO

OMA

(EASTERN)

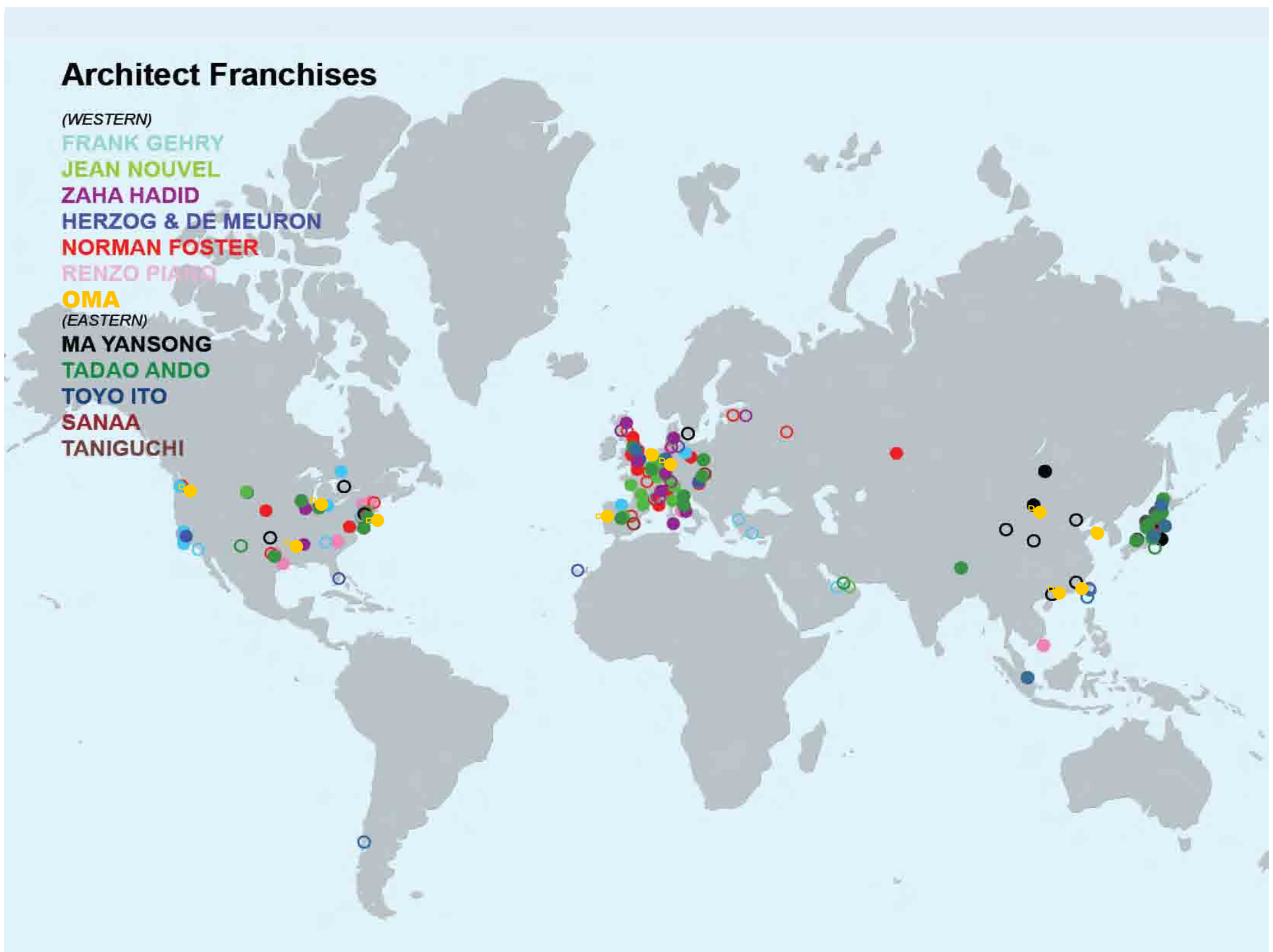
MA YANSONG

TADAQ ANDO

TOYO ITO

SANAA

TANIGUCHI



# Museum Franchises

- LOUVRE
- POMPIDOU
- GUGGENHEIM
- METROPOLITAN
- HERMITAGE













# Sarkozy presides over Louvre Abu Dhabi groundbreaking while launching French military base in the region

By Anna Somers Cocks. *Museums*, Issue 203, June 2009

Published online: 20 May 2009

**LONDON.** From the days of the monarchy, France has very deliberately made culture a partner in its foreign policy. President Nicolas Sarkozy took part in the groundbreaking ceremony for the Louvre Abu Dhabi on the occasion of his visit to inaugurate a new French military base in the UAE capital on 27 May. The museum project also benefited from the attention of Gulf heads of state coming to Abu Dhabi for the security conference chaired by the French president on 25 and 26 May. France has strong strategic interests in the UAE, where it already has an airforce and naval presence, and where it hopes to build two nuclear reactors.

An exhibition has been mounted of the first works of art bought for the future museum. Mondrian's *Composition in Blue, Red, Yellow, Black*, which fetched €21,569,000 at the Yves Saint Laurent sale this February, is among them.

LOUVRE ABU DABI  
LOUVRE ABU DHABI  
اللوفر أبوظبي



LOUVRE ABU DABI  
اللوفر أبوظبي





Society for the Protection of Ancient Buildings (UK) 1877

Commission des Monuments (France) 1790



400 BC

1882

Ancient Monuments Protection Act

The Ancient Monuments Protection Act 1882, introduced by Sir John Lubbock, recognises the need for governmental administration for the protection of ANCIENT MONUMENTS. The 68 monuments listed are mostly unoccupied prehistoric structures such as dolmens, stone circles, barrows and pillars.

1712

1913

Ancient Monuments Consolidation and Amendment Act

The Ancient Monuments Consolidation and Amendment Act expands the definition of the monument to "any structure, erection, or monument, of architectural or historic interest". It allows the inclusion of ROMANO-BRITISH AND MEDIEVAL MONUMENTS through the establishment of Royal Commissions.

1953

1983

National Heritage Act  
Dept. of the Environment Circular 507

The National Heritage Act establishes English Heritage as the government's lead advisor on the built environment. The Department of the Environment later removes the 1939 ceiling on listing buildings. It introduces the THIRTY YEAR RULE, by which any building older than this can be considered for listing.

2007

2007

Planning Policy Guidance Note 16  
Planning and the Historic Environment

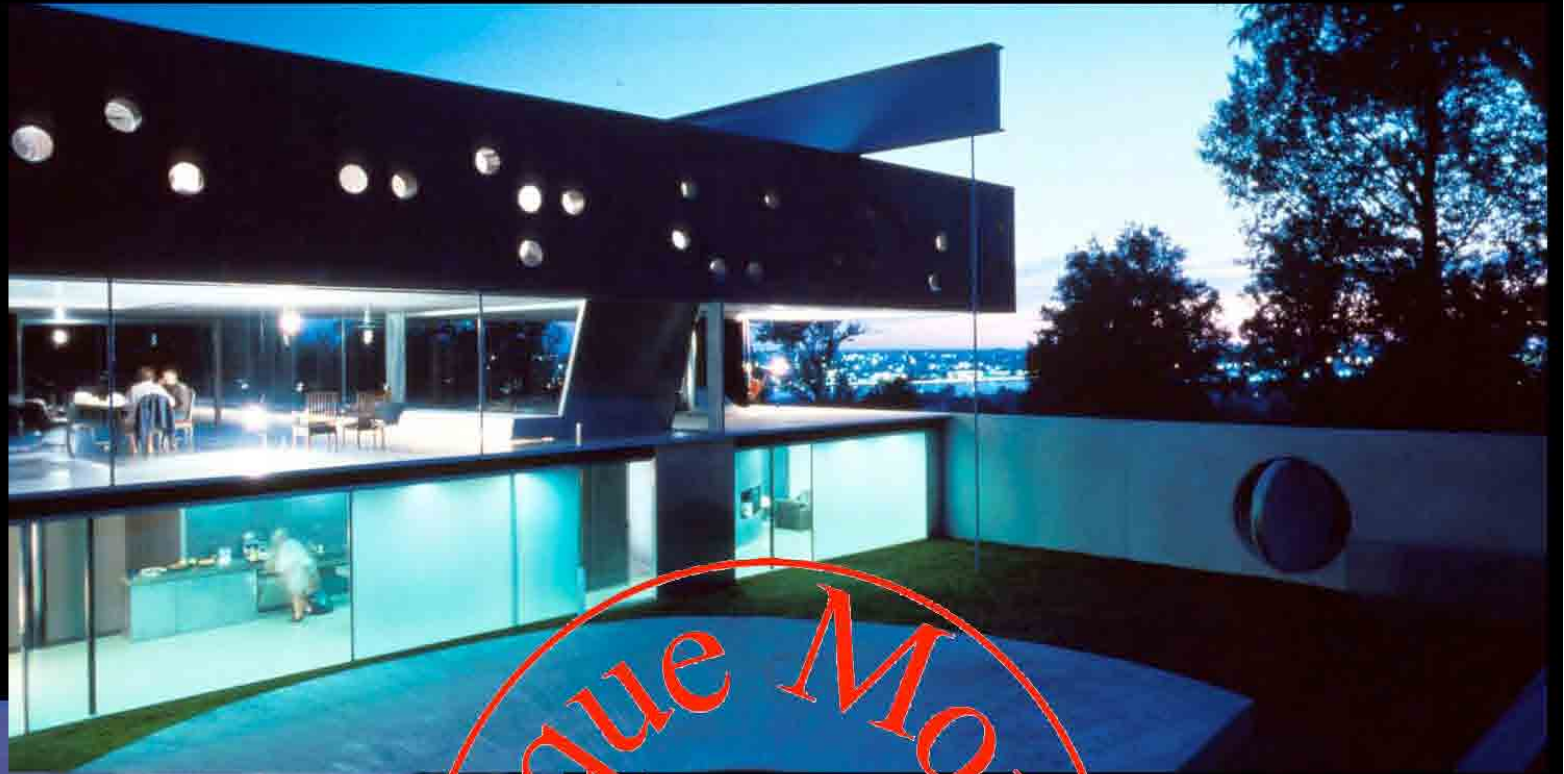
The 2007 revision of the Planning and Policy Guidance of the Historic Environment defines NO LIKELY PERIODS OF INTEREST as absolute. Buildings less than thirty years old can be listed if they are of outstanding quality and under threat.

Prospective?

Prospective preservation predefines a building's status as monument, ensuring a building's longevity and protection even BEFORE IT IS PHYSICALLY MANIFESTED.

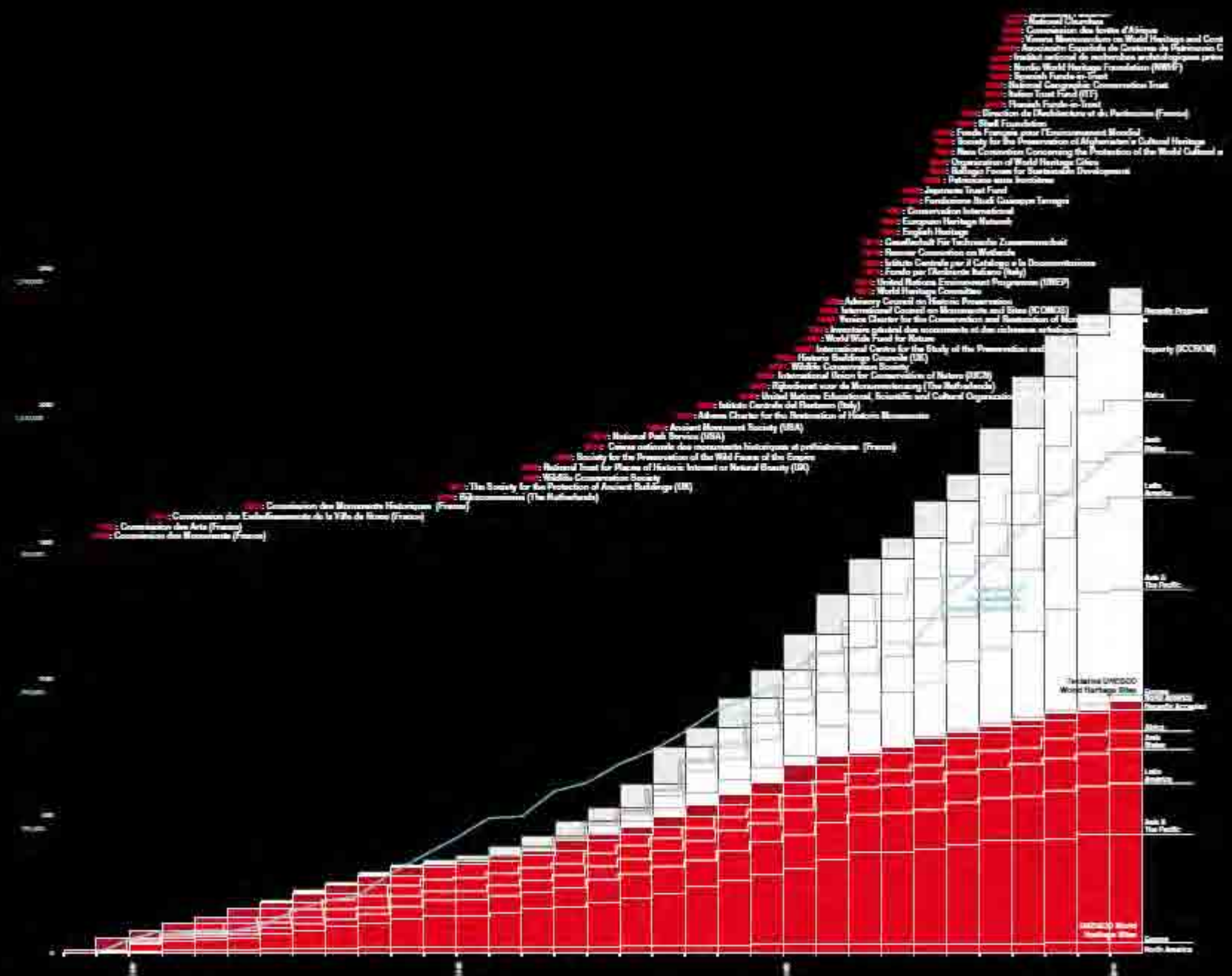


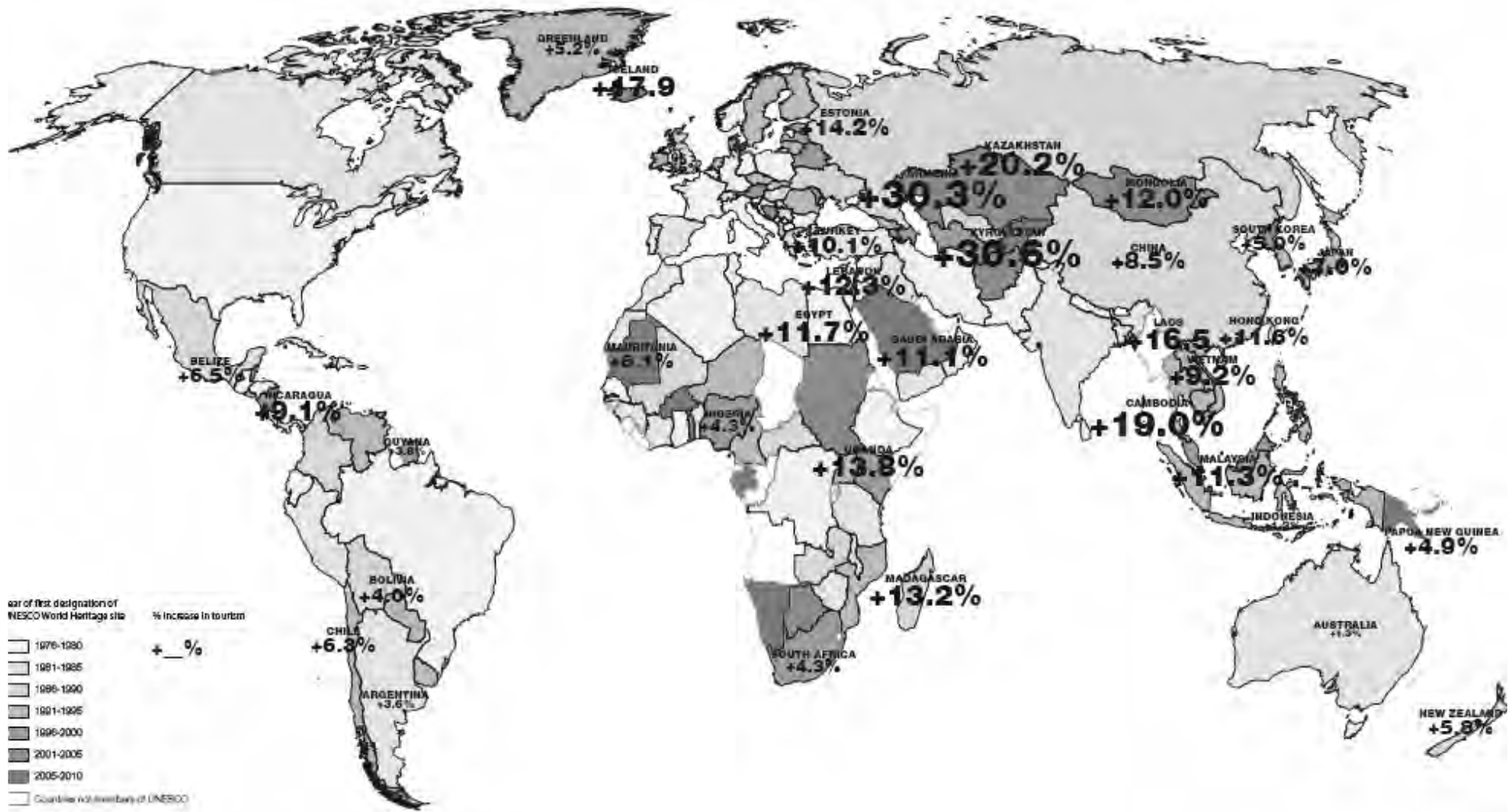
*Durabilité*



Historique Monument  
Class E

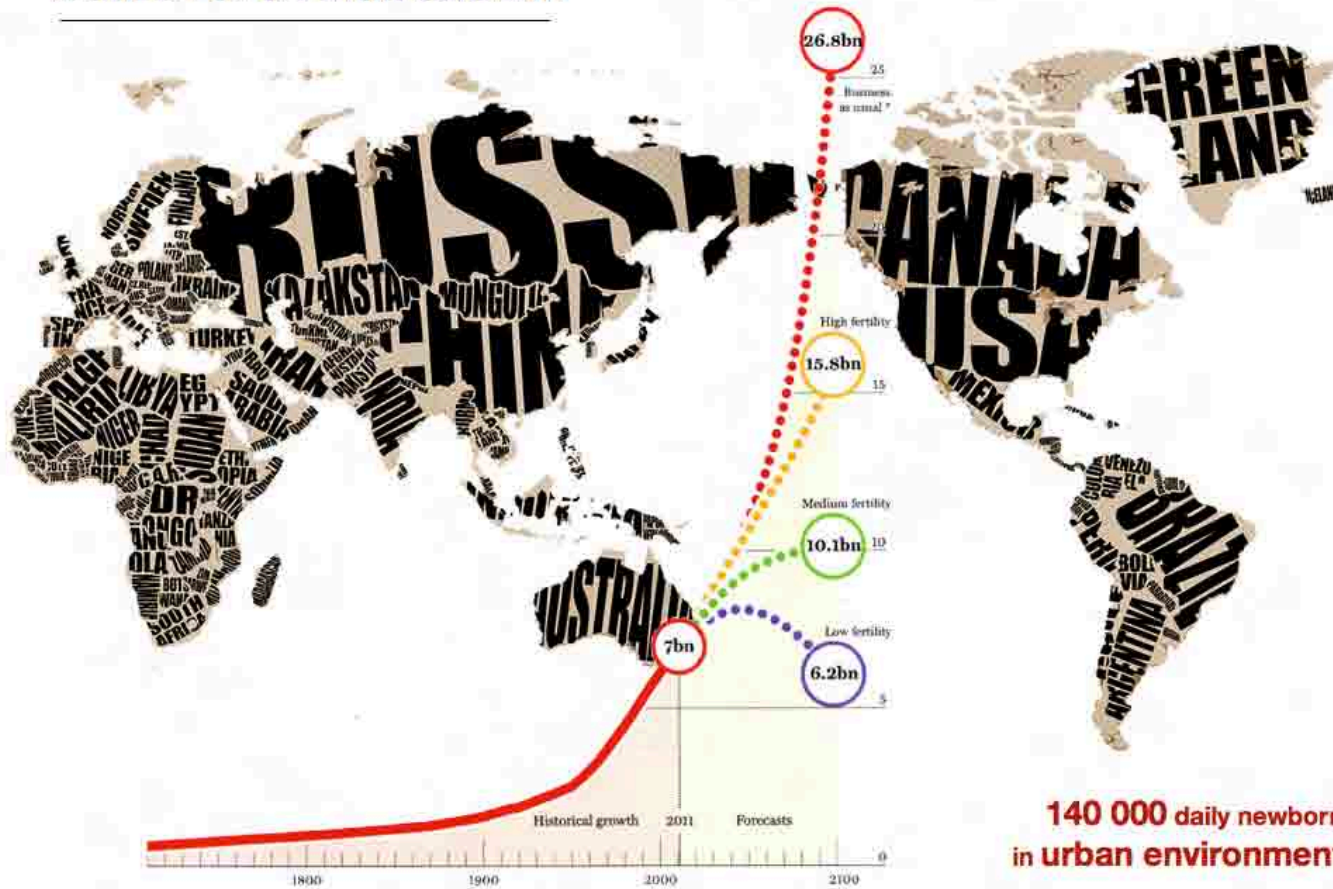
*Flexibilité*





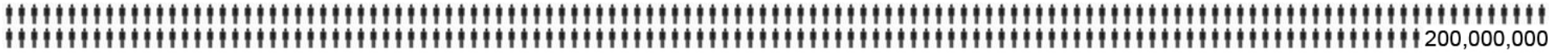
# WORLD POPULATION GROWTH

Projections for the world's population by the end of this century

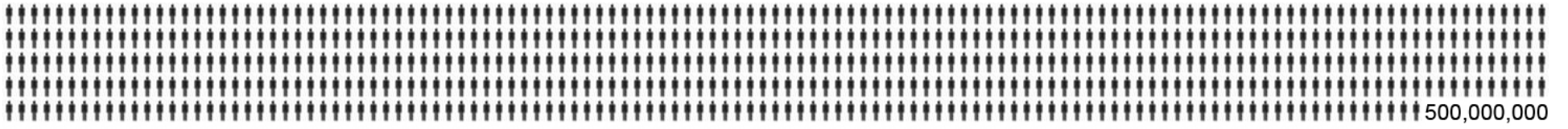


**140 000 daily newborn  
in urban environment**

source: UN Population Division



1 A.D.



1650

2009

6,874,900,000

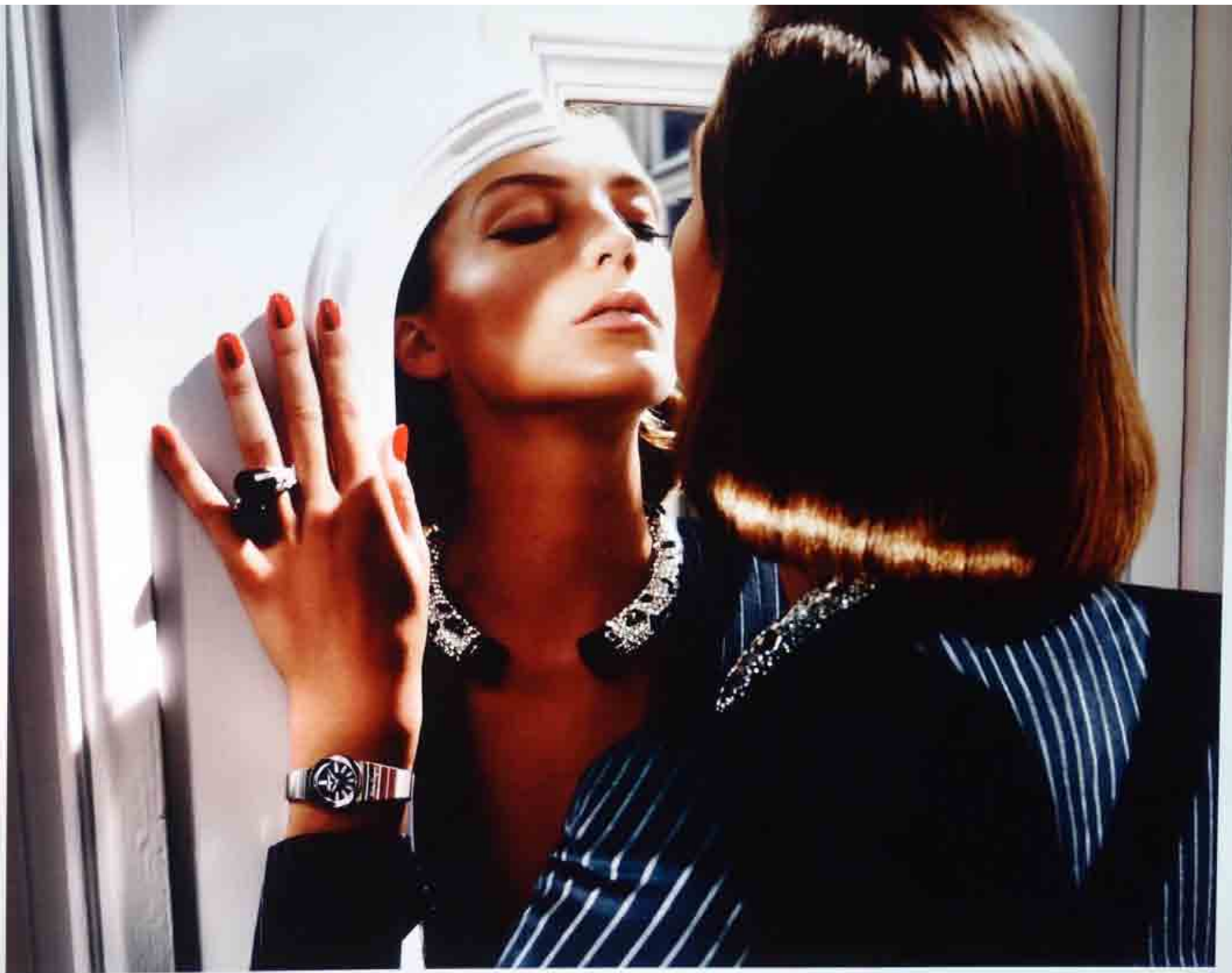
# WORLD MEGA CITIES











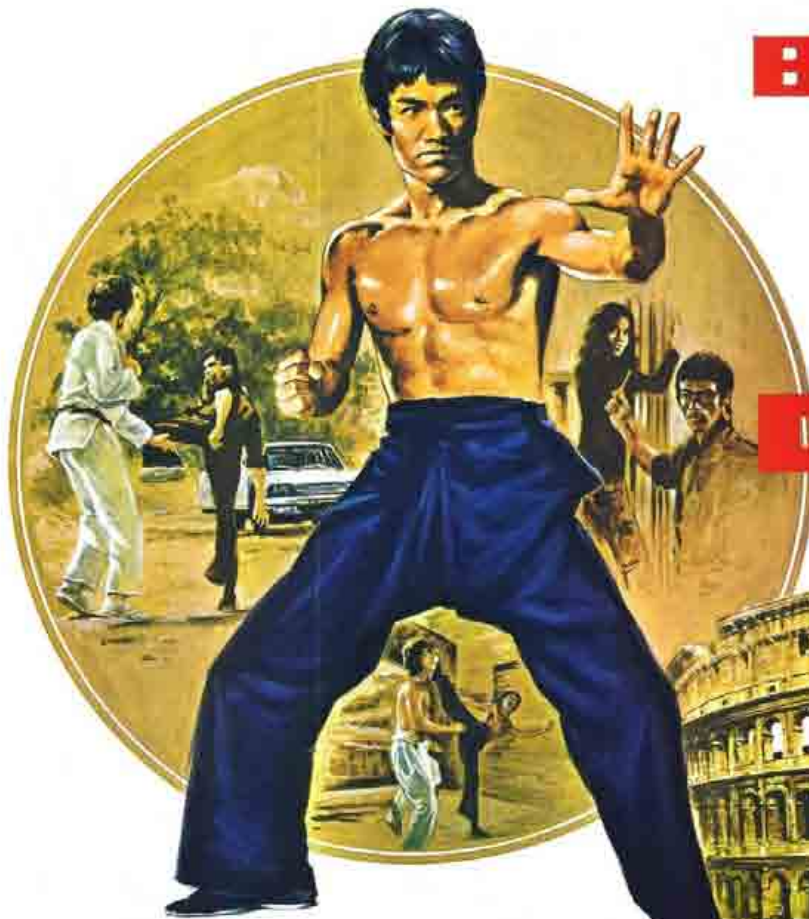
Salvatore Ferragamo











**BRUCE LEE**

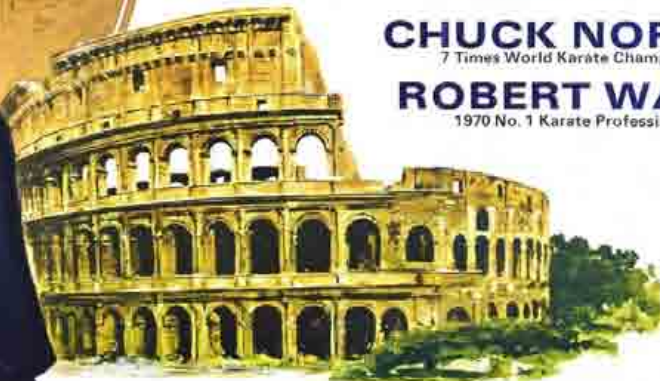
**THE  
WAY  
OF THE  
DRAGON**

COLOUR SCOPE X

**NORA MIAO**

**CHUCK NORRIS**  
7 Times World Karate Champion

**ROBERT WALL**  
1970 No. 1 Karate Professional



**WONG IN-SIK**  
Korean Master of Hapkido

PRODUCED BY  
**RAYMOND CHOW**

WRITTEN AND DIRECTED BY  
**BRUCE LEE**

A GOLDEN HARVEST PRODUCTION  
RELEASED THROUGH CATHAY FILMS





WALT DISNEY PRESENTS  
**Donald Duck**  
 In  
**THE FIDERUG**

BRRR! IT'S COLD THIS MORNING!  
 ARE YOU GOING TO START A FIRE, LINCA, DONALD?

I SUPPOSE I'LL HAVE TO DOGGONE IT! I HATE TO START FIRES!

IF PEOPLE COULD DO WITHOUT FIRES, THEY'D BE BETTER OFF!

OW! MY FOOT!

THUD  
 GLANK

I'M DIZZY! I FEEL AS IF MY HEAD IS ON FIRE!...GLEEP! PLEEP!

LEAD'S ON FIRE!...PLEEP! GLEEP!... BEAUTIFUL FIRE! FIRES ARE SWEET!

COME ON, LITTLE FIRE, BURN BRIGHT—LIKE MY HEAD!

AW! A BEEYOOTIFUL FIRE! I LOVE FIRES! I LOVE TO BUILD FIRES! I'M GOING TO BUILD FIRES EVERYWHERE!

40¢ 83 DEC 132449

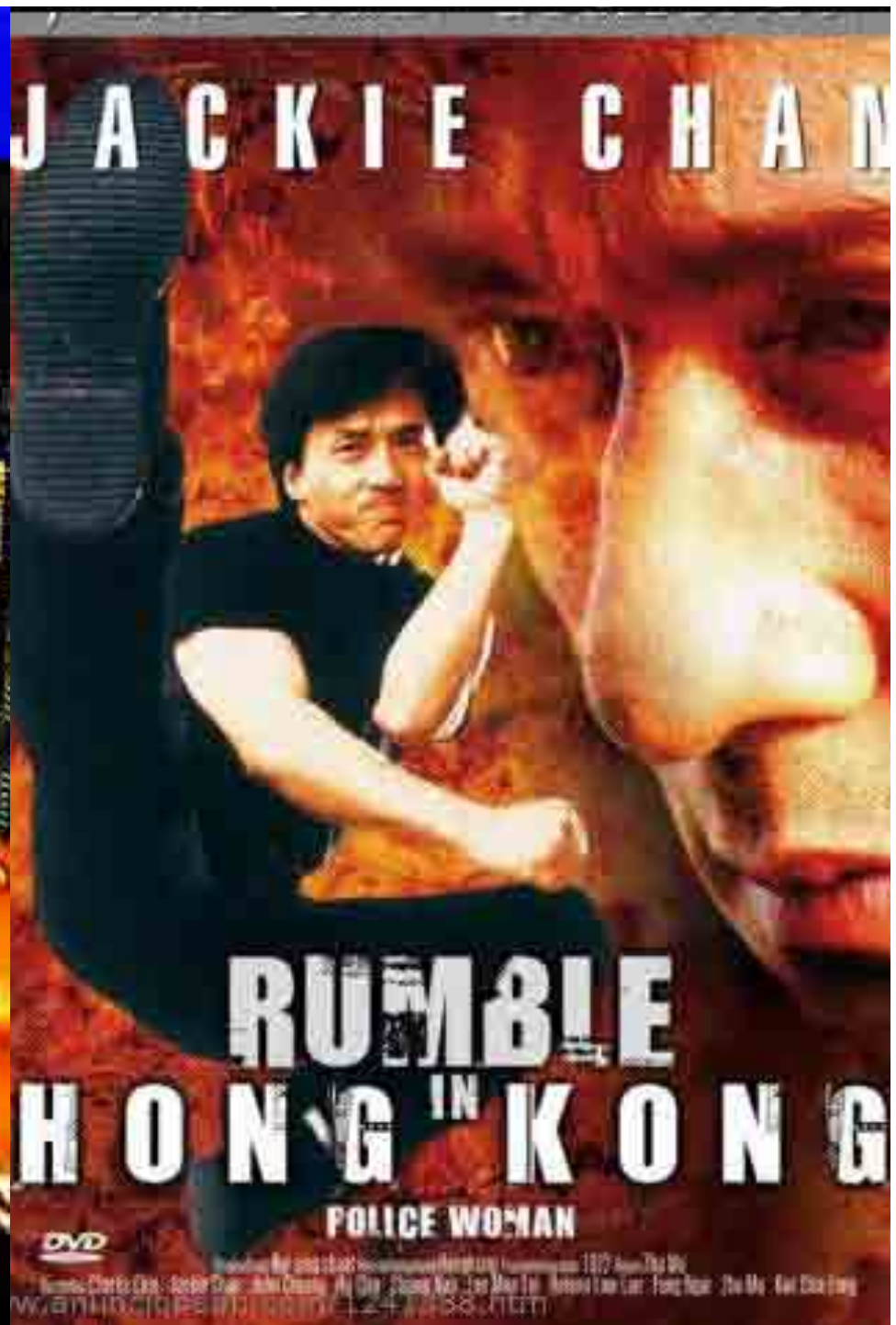
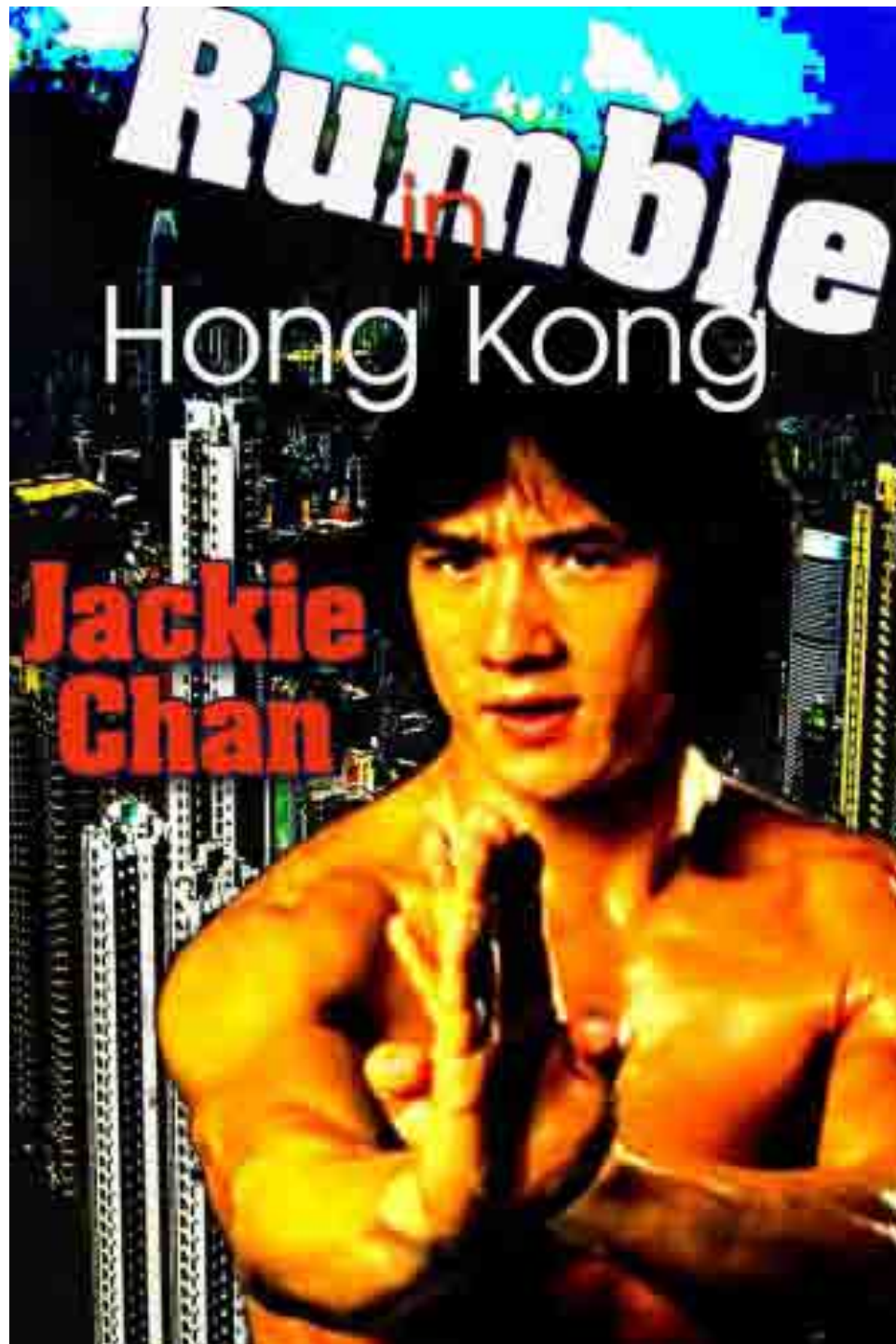
MARVEL COMICS GROUP



# MASTER OF KUNG FU

THE RETURN OF FU MANCHU!







J A C K B L A C K



DREAMWORKS

# KUNG FU PANDA

PREPARE FOR AWESOMENESS  
SUMMER 2008

# Heidi's Heimat



Appenzel Individuell



MINERALWASSE CONTENMAT AG  
[www.mineralgubä.ch](http://www.mineralgubä.ch)

Appenzel Individuell. Bienenquell.







*China,* MADE IN ITALY

*to Maurice*

*China,* MADE IN ITALY

by Gabriele Di Matteo

Avi and Valérie Keitelman invite you to the private view  
on Saturday 17th October 2009, 4.30-9.00pm

Exhibition : 19th October - 17th December 09

Opening hours : Thursday - Saturday 12 - 6 pm or by appointment

Address : rue Van Eyck 44 - 1000 Brussels

Phone : +32 2 511 35 80

Fax : +32 2 512 96 40

Email : [keitelmanof@keitelmangallery.com](mailto:keitelmanof@keitelmangallery.com)

Keitelman Gallery

# MATERIALIST'S

ART

Materialist's Art  
Wang Guangyi  
2006





# MATERIALIST'S



ART

GDM after Wang Guangyi  
Gabriele Di Matteo  
2009











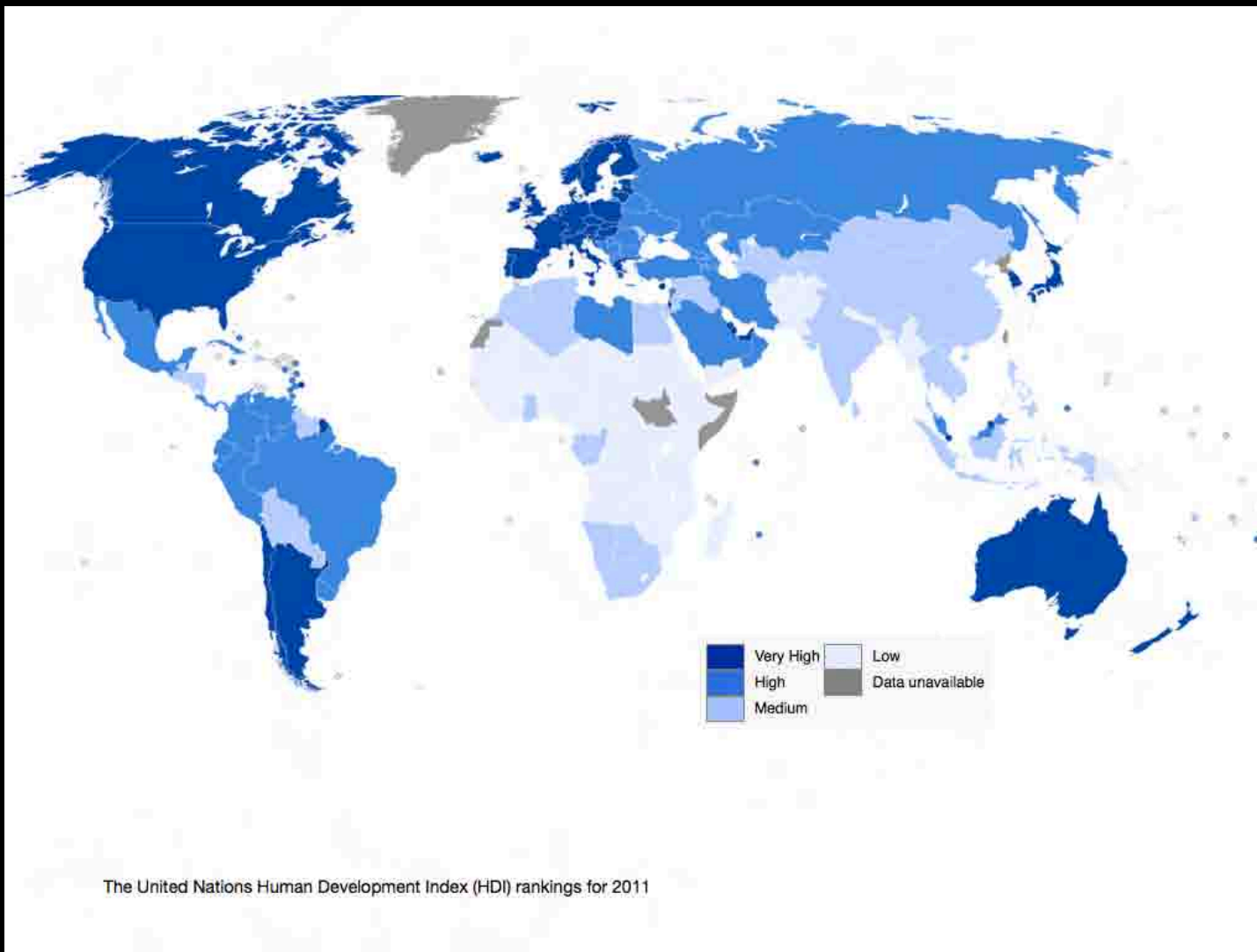




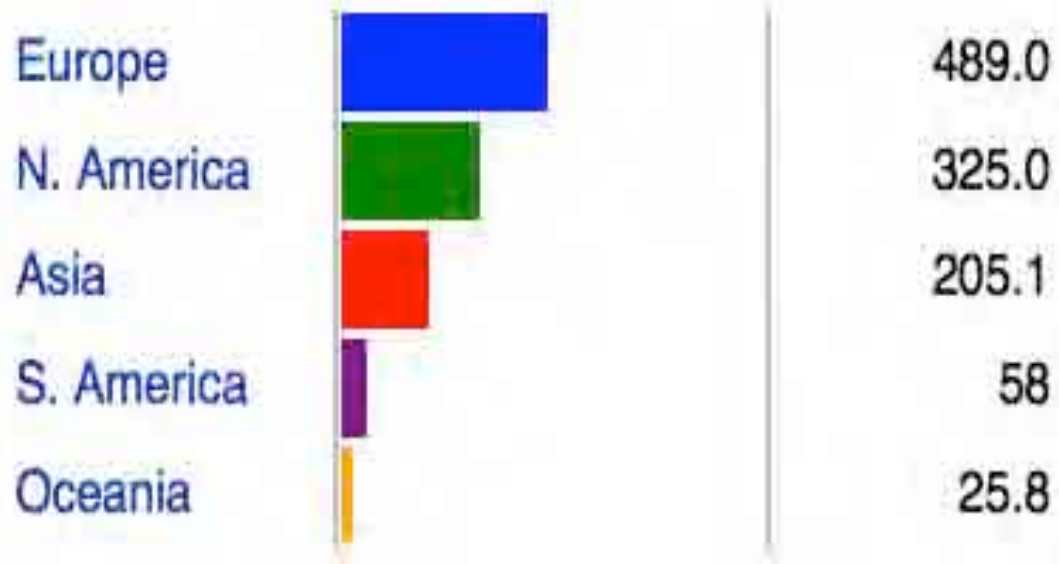




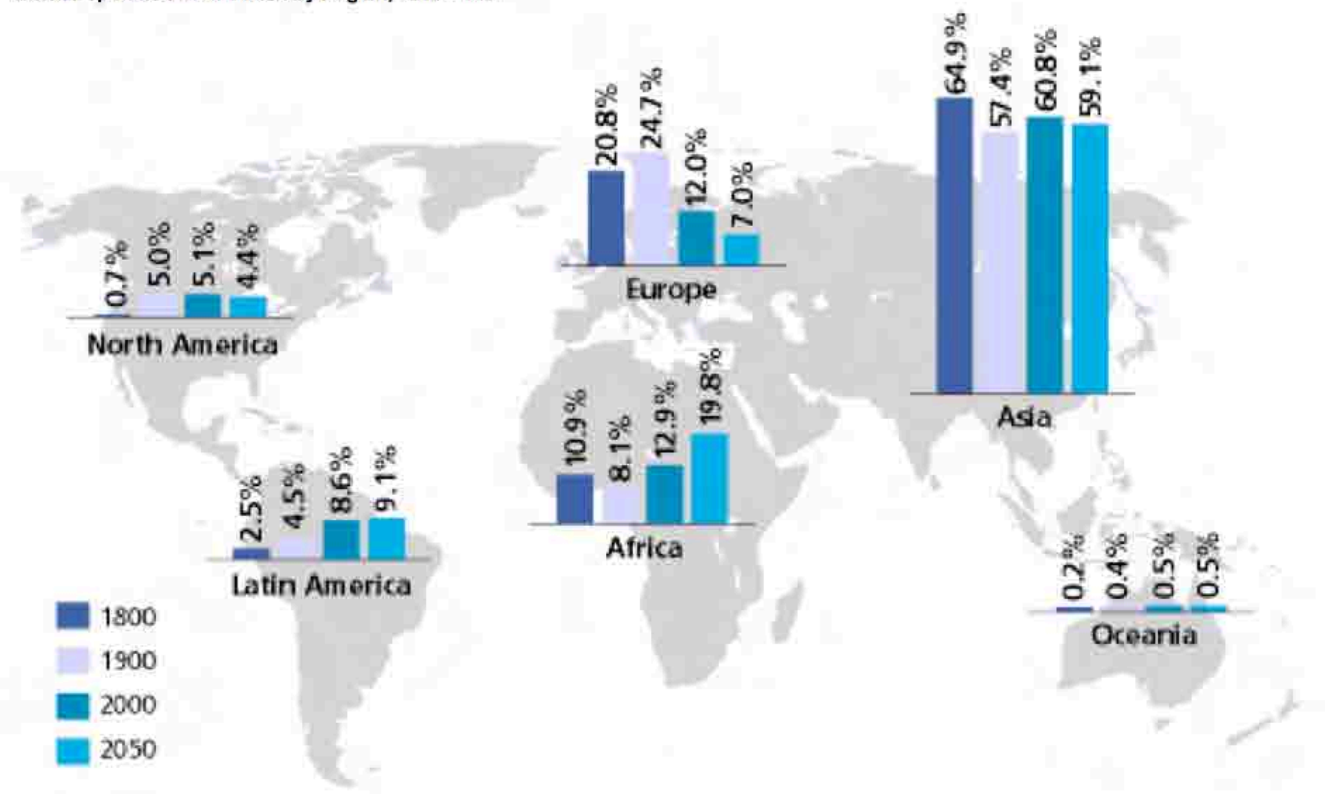




### 2011 Very High HDI nations, by population size



World Population Distribution by Region, 1800-2050



Source: DESA



PRESSEMITTEILUNG

# Koalition gefährdet mit Kürzungen die Freiheit des Goethe-Instituts

---

Stand: 12.11.2012

Dokument Nummer: 1250

Arbeitsgruppen: Haushalt, Kultur und Medien

Abgeordnete/r Klaus Brandner, Ulla Schmidt (Aachen)

Themen: Bundshaushalt, Kultur, Medien/Internet

Empfehlen: E-Mail, Facebook, Twitter

**Anlässlich der Bereinigungssitzung des Haushaltsausschusses erklären der zuständige Berichterstatter im Haushaltsausschuss der SPD-Bundestagsfraktion Klaus Brandner und die Obfrau für Auswärtige Kultur- und Bildungspolitik der SPD-Bundestagsfraktion Ulla Schmidt:**

Die Regierungskoalition hat in der Bereinigungssitzung Kürzungen und Sperrungen bei wichtigen Haushaltstiteln für das Goethe-Institut beschlossen. Damit schränkt sie nicht nur die Freiheit und die Arbeitsgrundlage des renommierten Instituts ein, sondern unterstreicht die Konzeptlosigkeit, die Außenminister Westwelle in zentralen Bereichen der deutschen Außenpolitik an den Tag legt.

# UK cuts threaten British Council influence abroad

Posted on Apr 18, 2012 by Dan Thomas

Posted in Government, News, Under Europe

Tagged with British Council, UK

Bookmark the permalink

A group of MPs has warned the **British Council** risks losing its “soft power” abroad and becoming predominantly an “international language school”, due to government cuts to Foreign Commonwealth Office (**FCO**) spending. Subject to the 2010 **Spending Review**, the Council’s FCO funding will fall from £185 million to £154 million by 2014-15, a 26% reduction.



English language teaching is a commercial activity for the British Council in India

Share this:



About Dan Thomas

Dan Thomas previously worked as a freelance finance and culture journalist. He has also worked in communications in the international education industry.

The **annual review** from the **Foreign Affairs Committee** commended the Council’s plans to adapt to financial circumstances which had put it under “great strain”.

However, it warned the organisation’s greater emphasis on commercial activity in response to the cuts could divert it from its primary purpose of building cultural ties, and turn it into a “substantially different” organisation.



---

**"The greater emphasis on commercial activity risks a diminution of the UK's influence and soft power"**

"The greater emphasis that the British Council will place on commercial activity risks a diminution of the UK's influence and soft power. This change is regrettable but understandable given the reduction in the FCO's grant-in-aid," states the report.

"While we give a cautious welcome to the British Council's plans, care must be taken to avoid the British Council becoming predominantly an international English language school rather than a promoter of the UK's reputation, culture and influence."

The Council has been adapting to spending cuts since 2007, and says it will continue to reduce its physical overseas network and initiate efficiencies such as the transfer of back-office functions.

However, with 27% of its funding coming from the FCO now set to fall to 16%, it must increase its revenue from earned income

which accounts for the remainder. In 2010-11, it earned £492 million, mainly from English teaching and examinations and commercial partnerships, and it hopes to increase revenue by between 9 and 15% annually over four years. In 2010-11 it only marginally increased its earned income.

Giving evidence to the committee, the Council's Chief Executive, Martin Davidson said: "We are, however, looking very carefully at the nature of our network, and our expectation is that for a number of our smaller operations we will become a very much smaller organisation – probably down to one or maybe only two people in some of the smaller countries." He said most of the impact would fall on the developed world.

---


**"Care must be taken to avoid the British Council becoming predominantly an international English language school"**

ChangeThis

# Chindia Rising

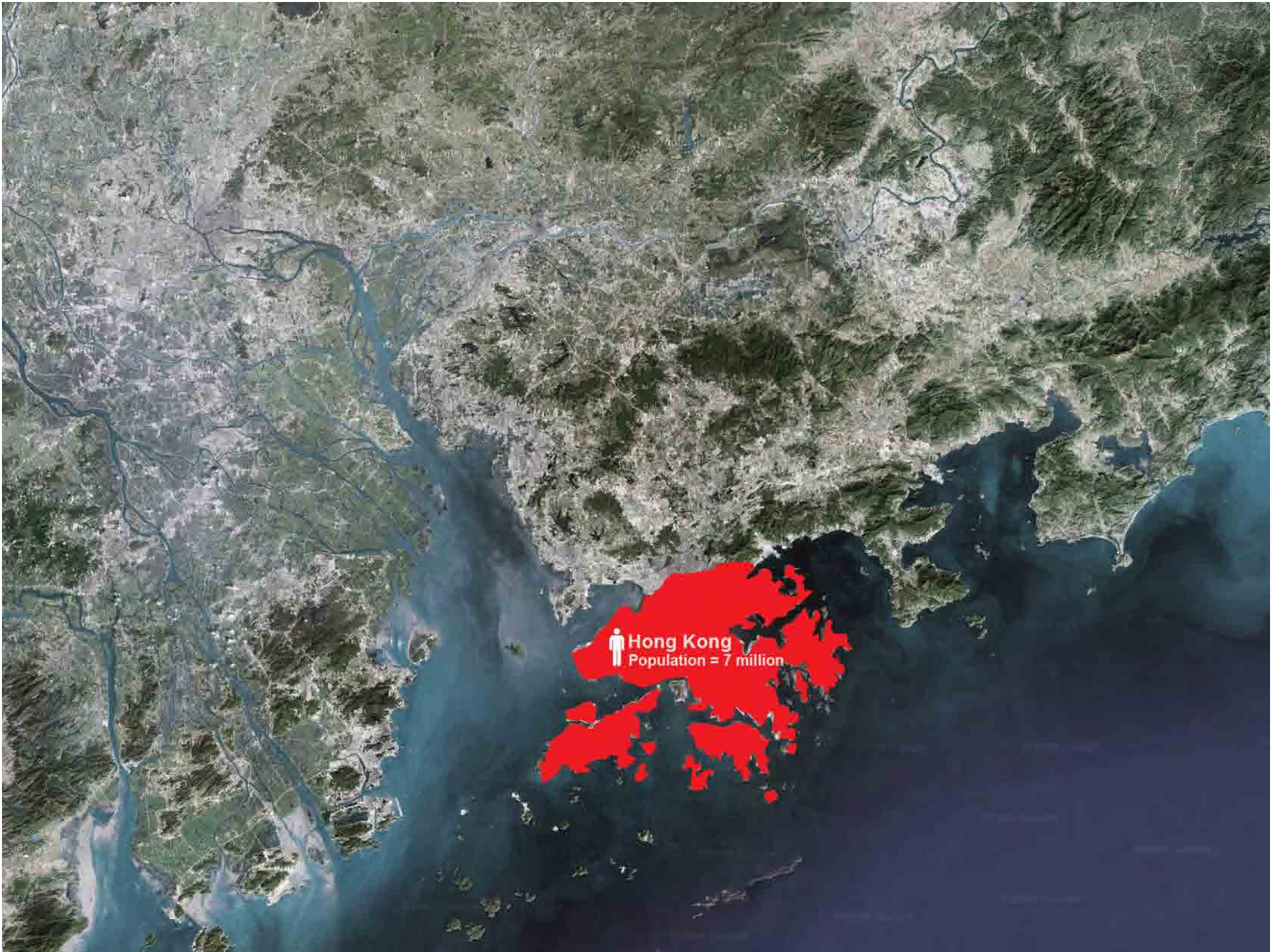
*Why the Rise of China and India is Inevitable* Jagdish N. Sheth

No. 48, 03

 Info

1/11 →







 HKSZ  
Population = 19 million



 PRD  
Population = 53.2 million











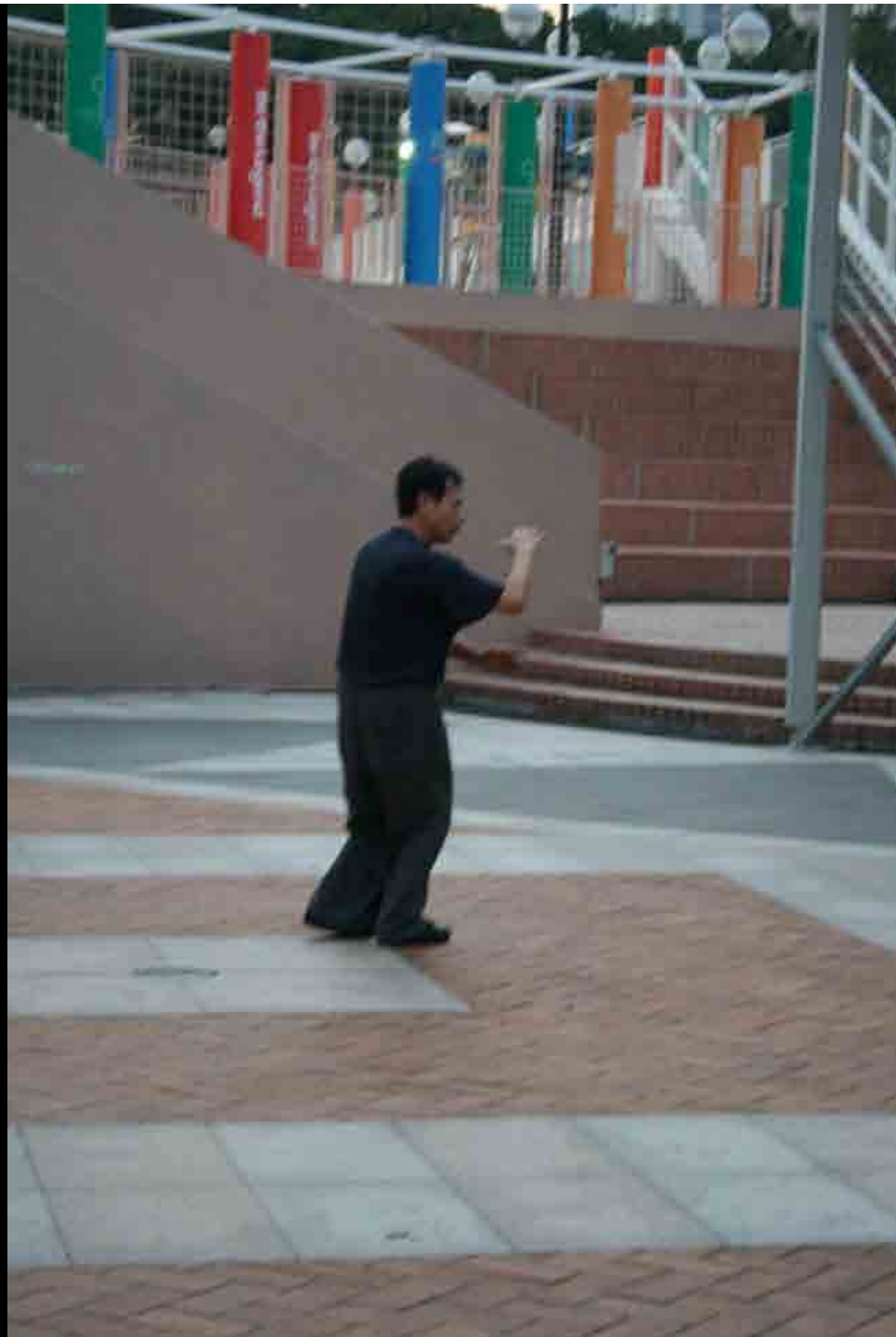




















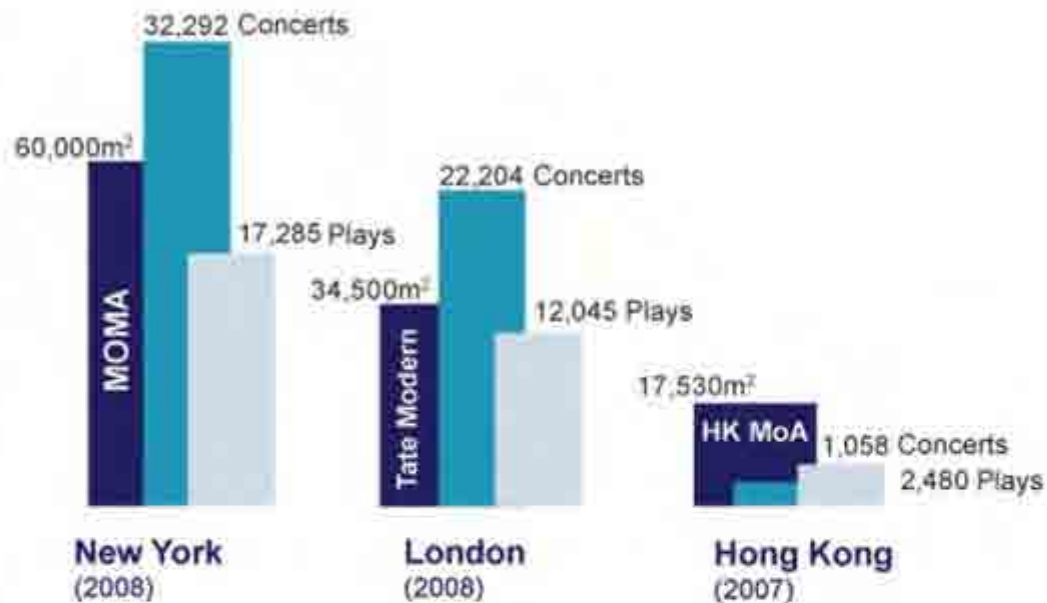








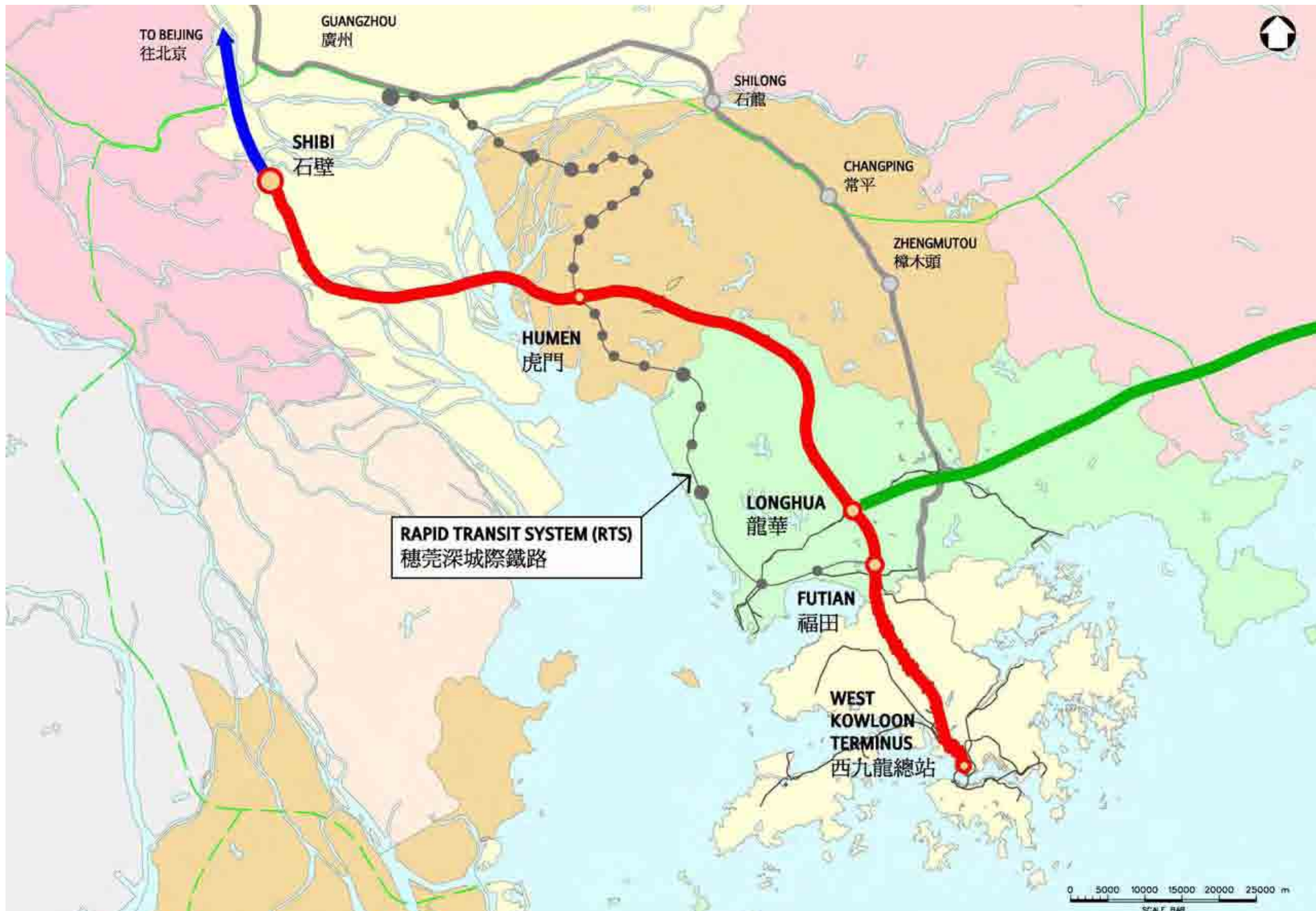
## Cultural Offering



## Cultural Employment







## Guangzhou-Shenzhen-Hong Kong Express Rail Link (XLR)

[http://www.mtr.com.hk/eng/projects/future\\_gz\\_sz\\_hk\\_xrl.html](http://www.mtr.com.hk/eng/projects/future_gz_sz_hk_xrl.html)

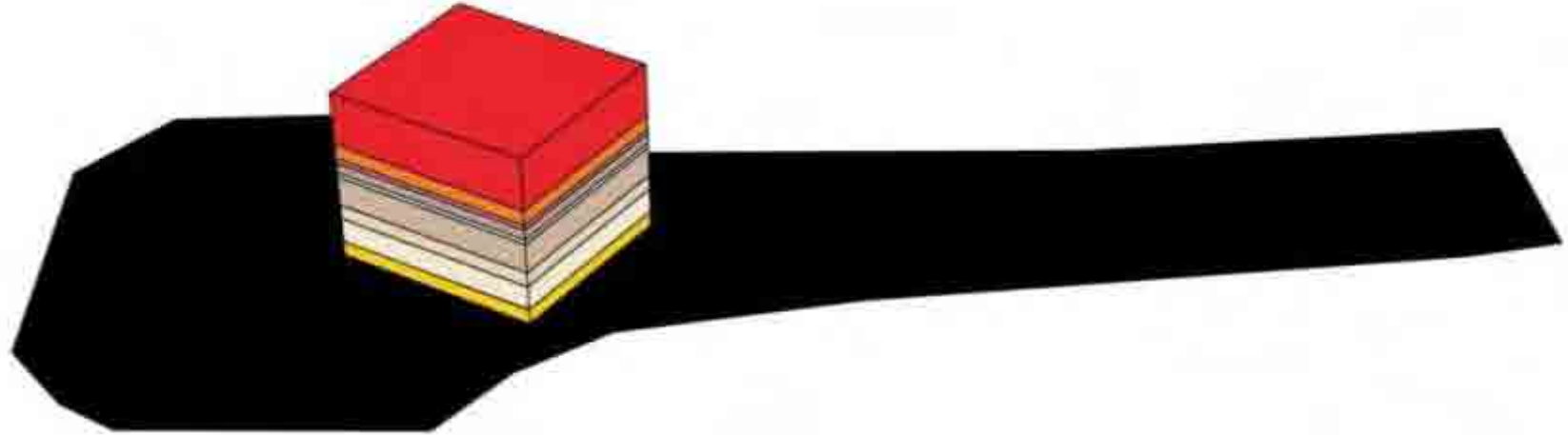


XLR EXPRESS  
TRAIN  
10,000 / HR

APPROVED: APRIL 2008  
SCHEDULED COMPLETION: 2015  
40,000,000 PASSENGERS / YEAR



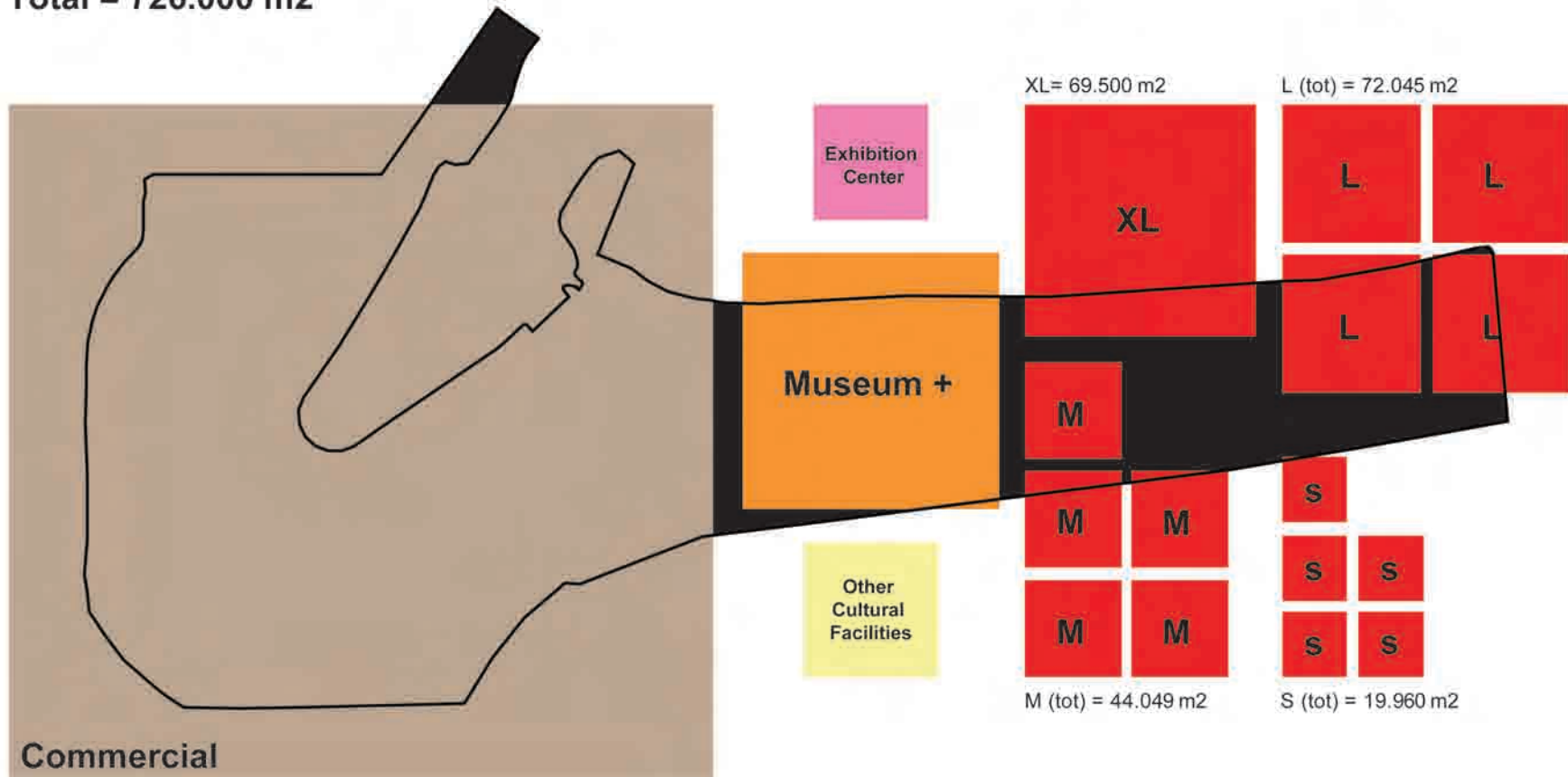
726 000 m<sup>2</sup>



# Commercial + Cultural Program

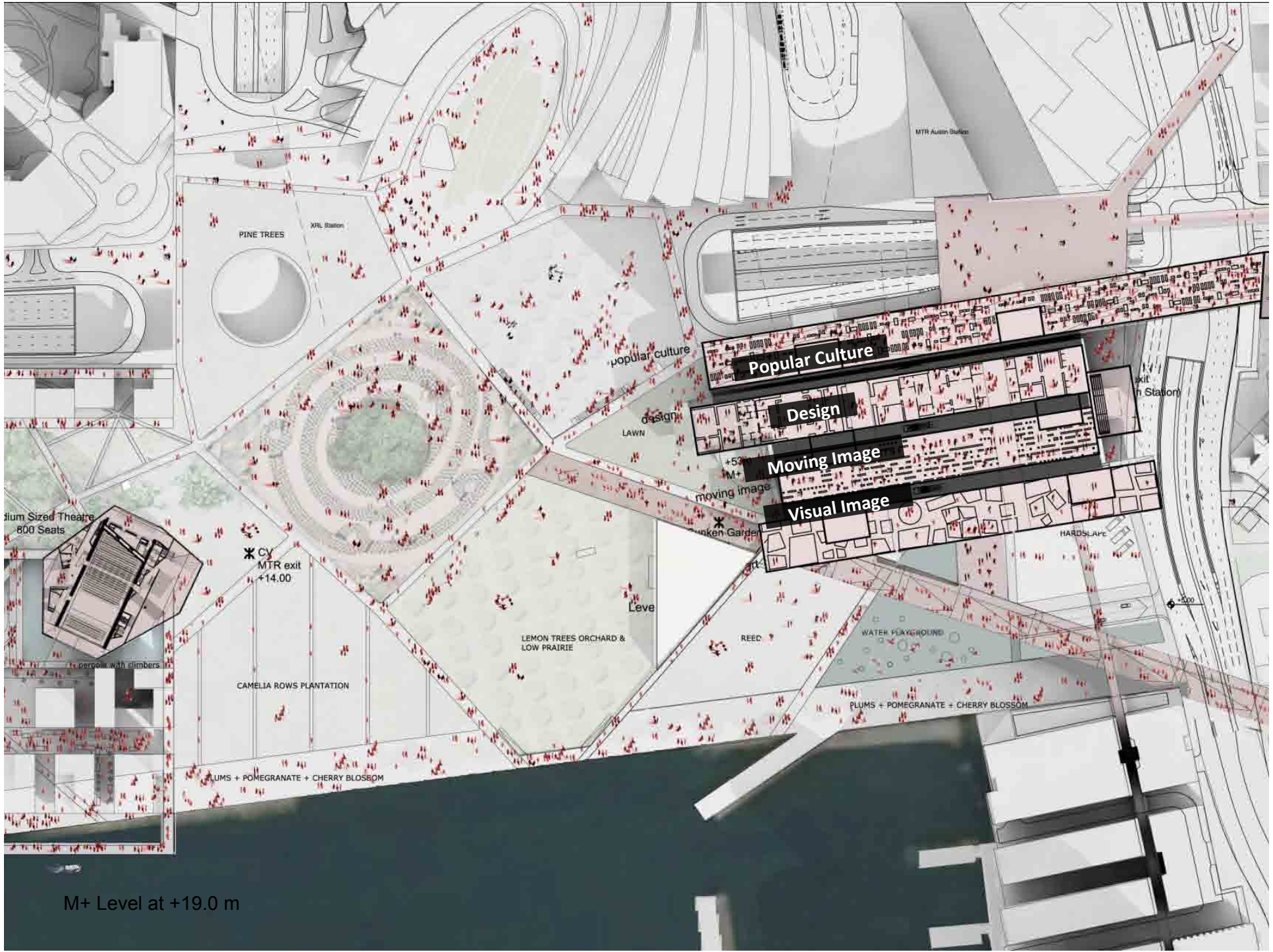
60% + 40%

Total = 726.000 m2









M+ Level at +19.0 m



# Uli Sigg Donates His Storied Chinese Contemporary Art Collection to Hong Kong's M+ Museum

Email

Print

Gefällt mir

Tweet 15

+1 0

Pin it



Uli Sigg

by Madeleine O'Dea, ARTINFO China

Published: June 12, 2012

**HONG KONG** — Legendary art collector **Uli Sigg** is to donate the major part of his collection of Chinese contemporary art to Hong Kong's **M+** museum. The donation, which has been "conservatively valued" by the museum at HK\$1.3 billion (\$163 million), was announced today and includes works by 350 artists including **Ai Weiwei, Ding Yi, Fang Lijun, Geng Jianyi, Gu Wenda, Huang Yongping, Liu Wei, Wang Guangyi, Xu Bing, Yang Shaobin, Yue Minjun, Yu Youhan, Zeng Fanzhi, Zhang Peili, and Zhang Xiaogang.**

HK-000 Hong Kong 12/2012 Ergebnis (ID 119365)

### M+ Museum Design Competition

Das Ergebnis ist in Arbeit. Bald finden Sie die Namen der Preisträger auf dieser Seite. Wenn Sie zu den Preisträgern gehören, können Sie sich einloggen und die Bilder für Ihren Wettbewerbsbeitrag veröffentlichen.

Beschränkter Wettbewerb

Zurück zur

#### PROJEKTDATEN

Entscheidung	10.12.2012
Verfahren	Beschränkter Wettbewerb
Berufsgruppen	Architekten
Gebäudetyp	Museen, Ausstellungsbauten, Dokumentationszentren, Kunsthallen
Art der Leistung	Objektplanung Gebäude
Zulassungsbereich	weltweit
Sprache	Englisch
Ort	HK-000 Hong Kong
Preisrichter	Rafael Moneo, Eve Blau, Kathy Halbreich, William Lim, Victor Lo, Leslie Liu, Lars Nittve, Uli Sigg, Joarlin Au, Yuko Hasegawa
Aufgabe	<p>The West Kowloon Cultural District (WKCD) is one of the world's largest and most ambitious arts and cultural building programmes which will deliver up to 17 new performing arts and visual culture facilities, open spaces, education, commercial and retail facilities as part of a new cultural hub being developed with funding from the Hong Kong SAR Government.</p> <p>M+ will be the new museum for 20th and 21st century art and visual culture in the WKCD. M+ is an ambitious project, to create a museum on the physical scale of the world's largest museums of visual culture, aspiring to over time attain an international status comparable to that of MoMA in New York, Centre Pompidou in Paris or Tate Modern in London. It aims to be a museum that is rooted in and shaped by its location - Hong Kong - and the unique culture of this city: it is fundamental that it should be a museum for the people living and working here. M+ should have a Hong Kong point of view with a global perspective.</p>



