

EXPORT/IMPORT

Aber was ist eigentlich Kultur?

Michael Schindhelm,
Lugano/London

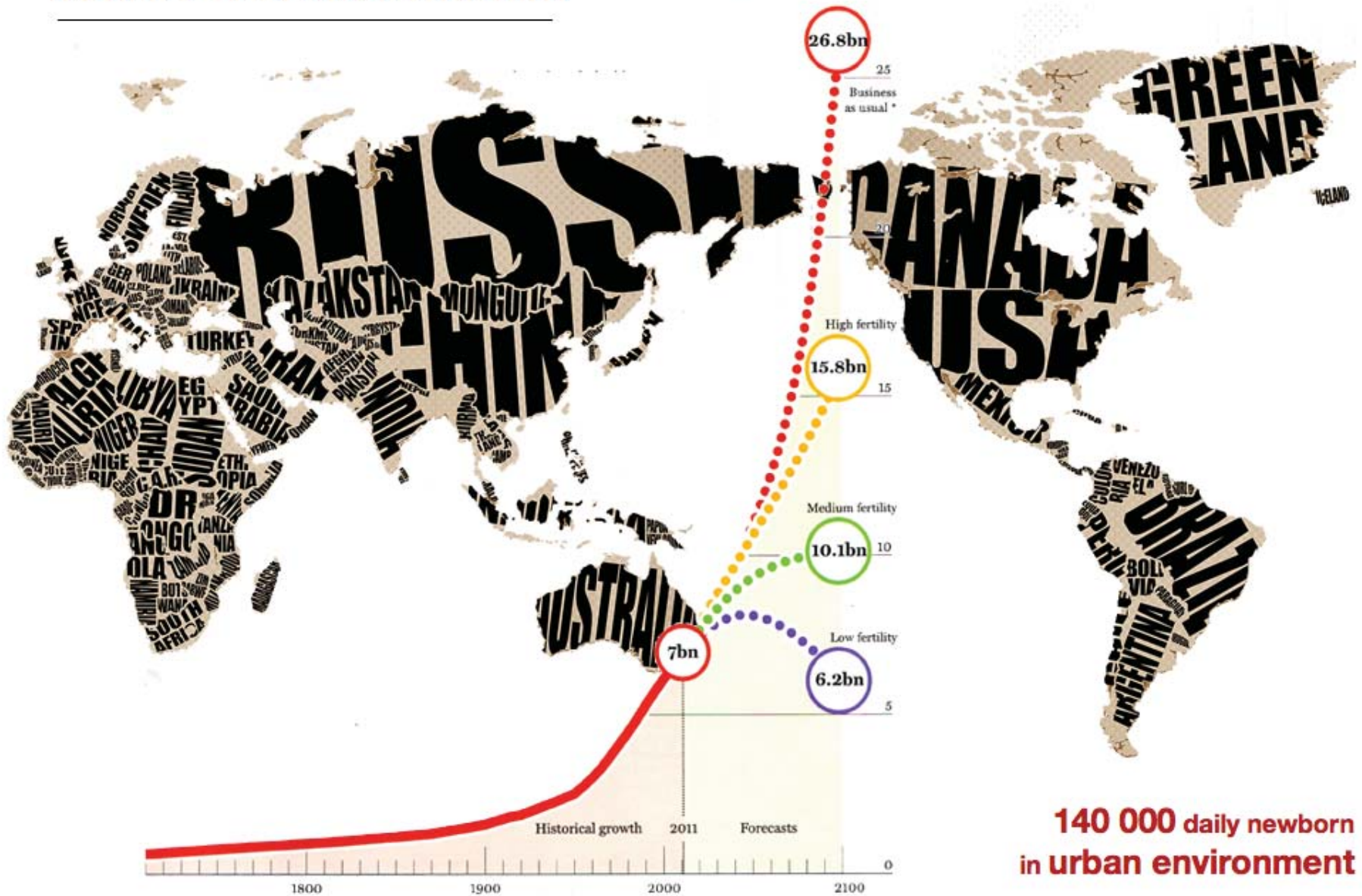






WORLD POPULATION GROWTH

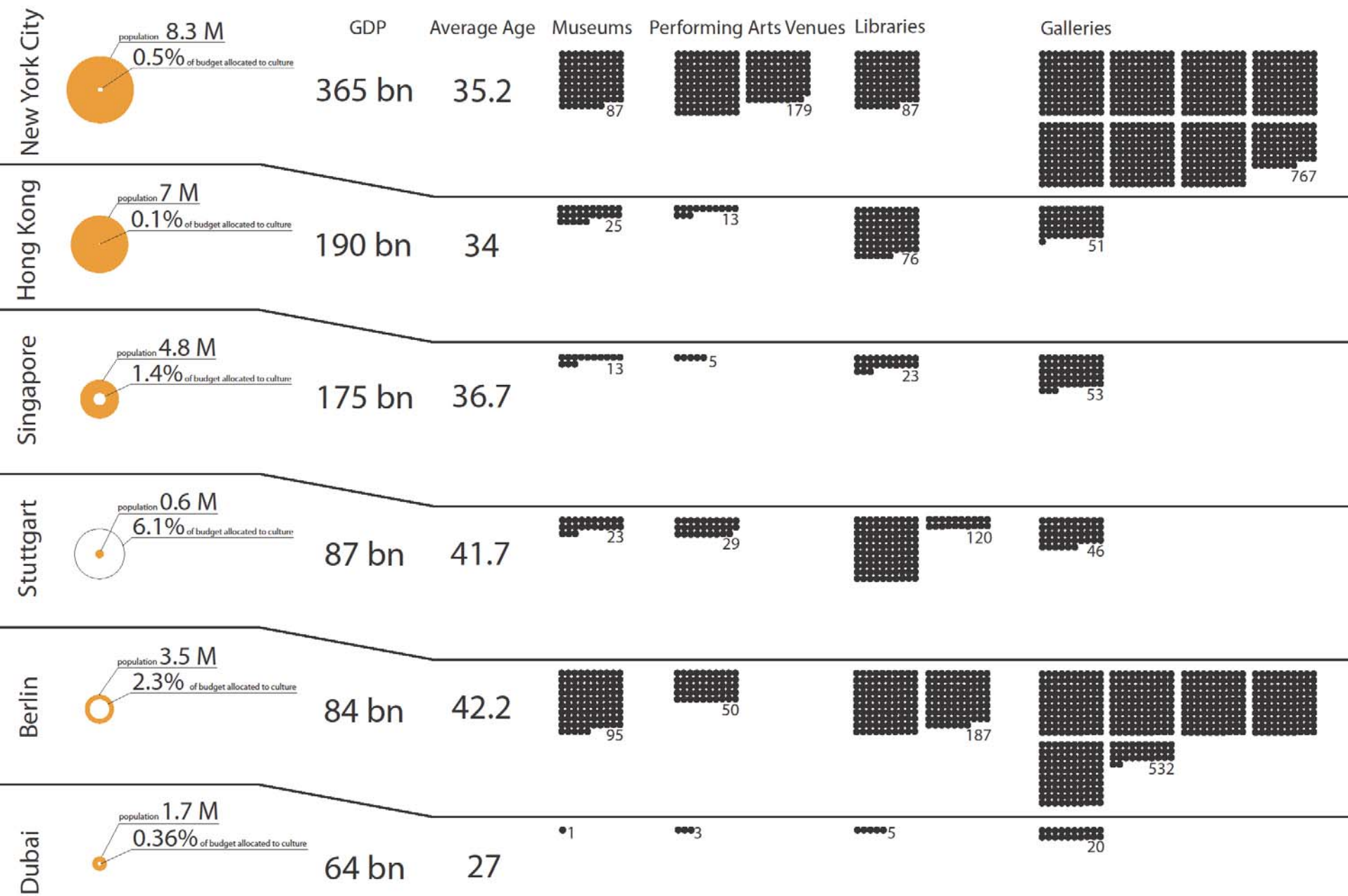
Projections for the world's population by the end of this century



**140 000 daily newborn
in urban environment**

WORLD MEGA CITIES













Architect Franchises

(WESTERN)

FRANK GEHRY

JEAN NOUVEL

ZAHA HADID

HERZOG & DE MEURON

NORMAN FOSTER

RENZO PIANO

OMA

(EASTERN)

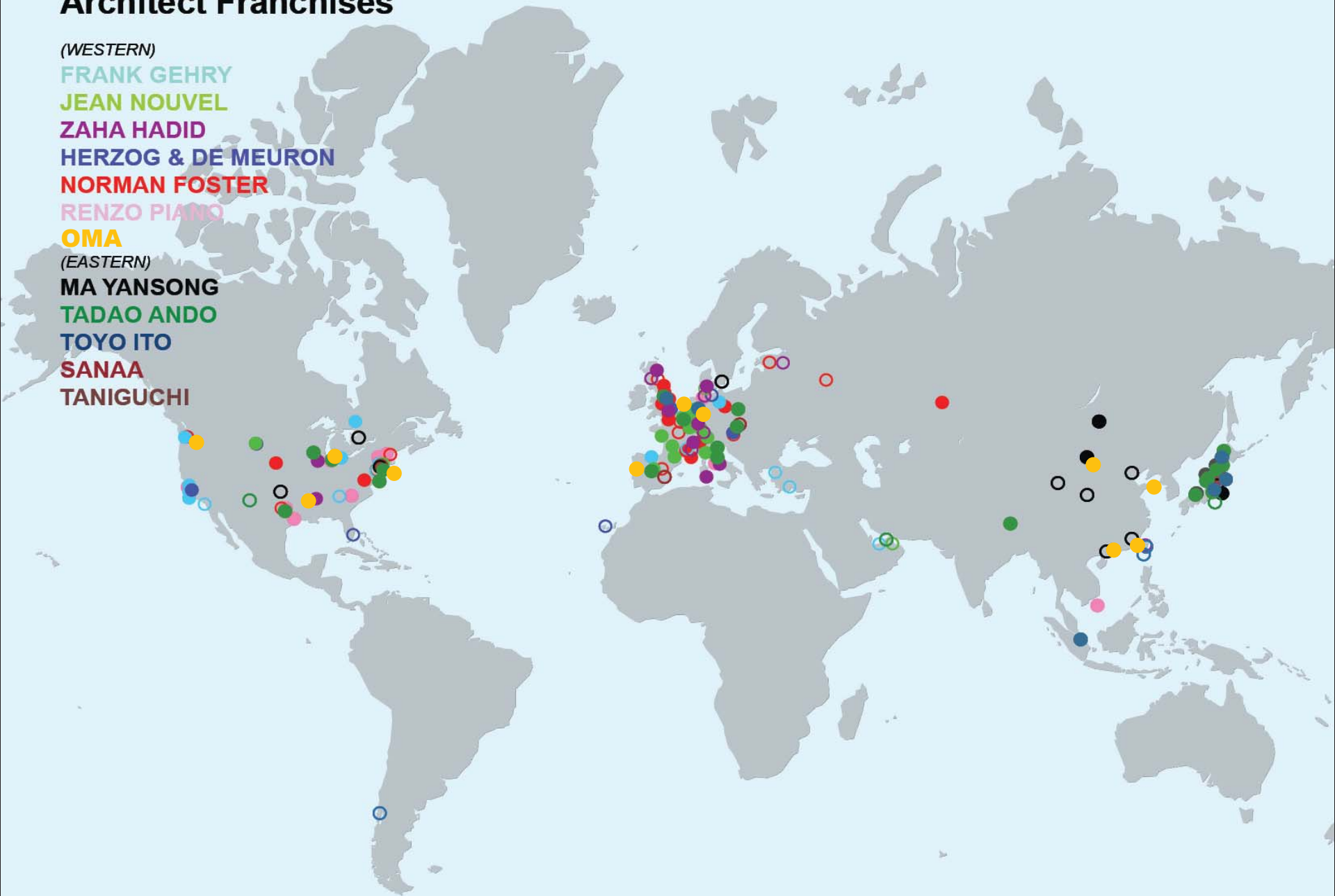
MA YANSONG

TADAO ANDO

TOYO ITO

SANAA

TANIGUCHI



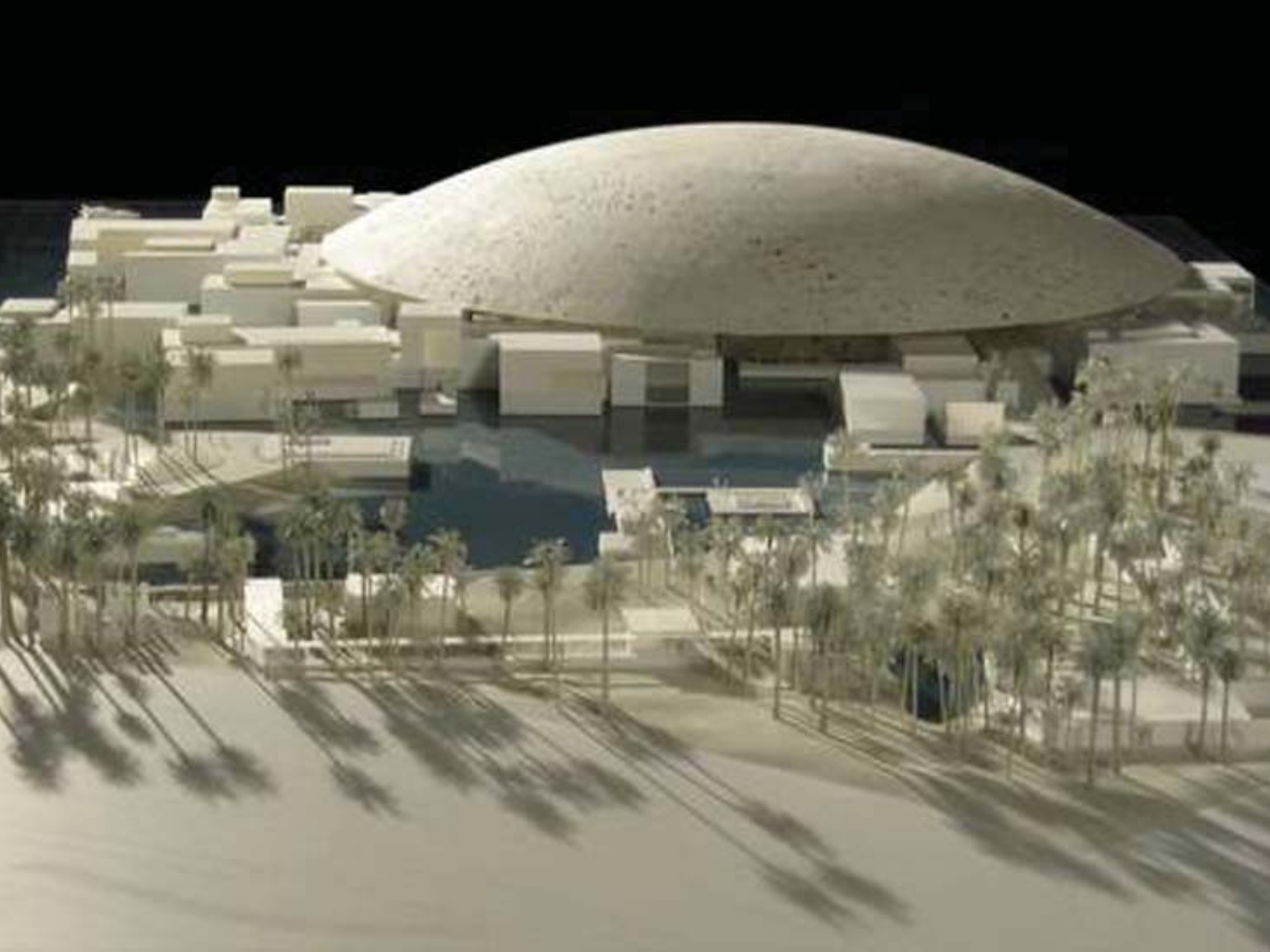
Museum Franchises

LOUVRE
POMPIDOU
GUGGENHEIM
METROPOLITAN
HERMITAGE









06. März 2007, 17:25 Uhr

"Louvre Abu Dhabi"

Die Kunst des Mega-Deals

Das Emirat Abu Dhabi unterzeichnete heute mit Frankreich einen Vertrag über eine eigene Louvre-Filiale. 700 Millionen Euro fließen in die Kassen der grande nation.

Paris - Frankreich und Abu Dhabi haben sich für einen Ableger des renommierten Pariser Louvre in Abu Dhabi entschieden. Das französische Kulturministerium in Paris teilte heute mit, dass ein entsprechender Vertrag unterzeichnet worden sei. Das 24.000 Quadratmeter große Museum wird unter dem Namen "Louvre Abu Dhabi" über einen Zeitraum von 20 Jahren wechselnde Leihgaben ausstellen. Als Lizenzgebühr dafür erhält Frankreich rund 700.000 Millionen Euro, davon sind 400 Millionen Euro allein für die Nutzung des Markennames "Louvre".

Sarkozy presides over Louvre Abu Dhabi groundbreaking while launching French military base in the region

By Anna Somers Cocks. *Museums*, Issue 203, June 2009

Published online: 20 May 2009

LONDON. From the days of the monarchy, France has very deliberately made culture a partner in its foreign policy. President Nicolas Sarkozy took part in the groundbreaking ceremony for the Louvre Abu Dhabi on the occasion of his visit to inaugurate a new French military base in the UAE capital on 27 May. The museum project also benefited from the attention of Gulf heads of state coming to Abu Dhabi for the security conference chaired by the French president on 25 and 26 May. France has strong strategic interests in the UAE, where it already has an airforce and naval presence, and where it hopes to build two nuclear reactors.

An exhibition has been mounted of the first works of art bought for the future museum. Mondrian's *Composition in Blue, Red, Yellow, Black*, which fetched €21,569,000 at the Yves Saint Laurent sale this February, is among them.

LOUVRE ABOU DABI
LOUVRE ABU DHABI
اللوفا أبو ظبي



THE BOMBSHELL

Louvre, Guggenheim and NYU Accept Millions From Abu Dhabi but Remain Silent on Human Rights

By Nina Burleigh 2/20 4:11pm

[Twitter 151](#) [Facebook 652](#) [Reddit](#) [Email](#) [Print](#)



Three of the Western world's premier cultural institutions—New York University, the Guggenheim and the Louvre—are in various stages of setting up shop on Sa'adiyat ("Happiness") Island in Abu Dhabi, forming what has been described as a "highbrow cultural theme park" in the desert city-state. The deals that the Guggenheim and NYU cut with the emir are not news. Petro-potentates started collecting liberal institutions as the latest Western must-have a decade ago.

What is news is the silence around last month's 2013 Human Rights Watch report claiming that the human rights situation in

the United Arab Emirates (of which Abu Dhabi is a city-state) "deteriorated rapidly" in 2012.

NEXT ON OBSERVER

MANHATTAN TRANSFERS

Jenga! Penthouse at 56 Leonard Hits the Market For \$24 M.

CONNECT WITH NEW YORK OBSERVER

Enter your email for updates

SIGN UP

Send an anonymous tip

SEND

POPULAR THE OBSERVER

Muslim Bikini Model Maryam Basir Enjoys Her Moment

Veritas Capital Founder Robert B. McKeon Dead in Apparent Suicide

The Bowery Boys Push Back: Preservation Effort For Manhattan's Historic Thoroughfare Gathers Steam

Mom Buys Two-year-old \$6.5





An aerial photograph of a city, likely Istanbul, showing a dense urban area with a prominent mosque featuring a large white dome and minaret. The city is situated along a river, with numerous boats visible in the water. The architecture is a mix of traditional and modern buildings. The text "WHAT IS THE CITY BUT THE PEOPLE?" and "William Shakespeare" is overlaid in yellow.

WHAT IS THE CITY BUT THE PEOPLE?
William Shakespeare



Geography

Located on the Southern shore of the Persian Gulf

Second largest of the seven Emirates of the United Arab Emirates

2.5 hours from Mumbai

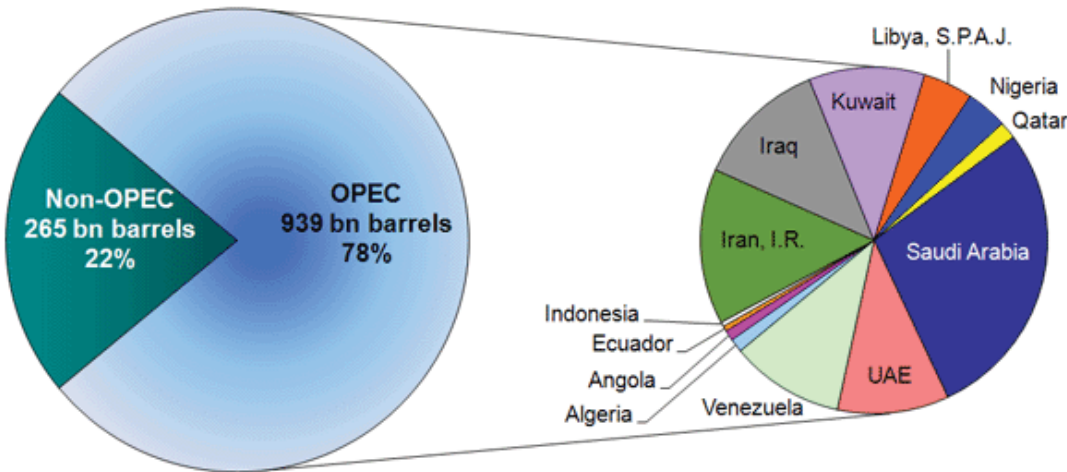
4.5 hours from Moscow

6 hours from Paris

7 hours from London

7.5 hours from Beijing

Crude Oil Reserves in the Region (2007)



| | |
|--------------|-------------------------|
| Saudi Arabia | 264.21 bn barrels |
| Iran | 136.15 bn barrels |
| Iraq | 115.00 bn barrels |
| Kuwait | 101.50 bn barrels |
| UAE | 97.80 bn barrels |
| Quatar | 15.21 bn barrels |

Production capacities

| | |
|-----------|--------------------|
| Abu Dhabi | 3 Mio. barrels/day |
| Dubai | 80 K barrels/day |



لقد علمتنا الصحراء أن نصبر
طويلا حتى ينبت الخير وعلينا أن
نصبر ونواصل مسيرة البناء حتى
نحقق الخير للوطن.

Desert has taught us to wait long
periods of time until we see green
plants. So we have to be patient and
resume our building process in
order to achieve the nation welfare.



Economy 2001 - 2007

| | |
|--------------------------------------|---|
| GDP (2007) | \$ 73 bn |
| Average Annual Growth (2001-2005) | 13.4 % |
| GDP by Sector | |
| Services | 73.6 % (trade, construction, transport, storage & communication, real estate & business, restaurants & hotels, social & personal services, domestic services) |
| Manufacturing | 13.1 % |
| Oil & Gas | 5.1 % |
| Other | 8.2 % |

2,369 buildings completed in 2007

World's largest building to be completed in 2009

1968:
59,000

1985:
370,788

2006:
1,204,000



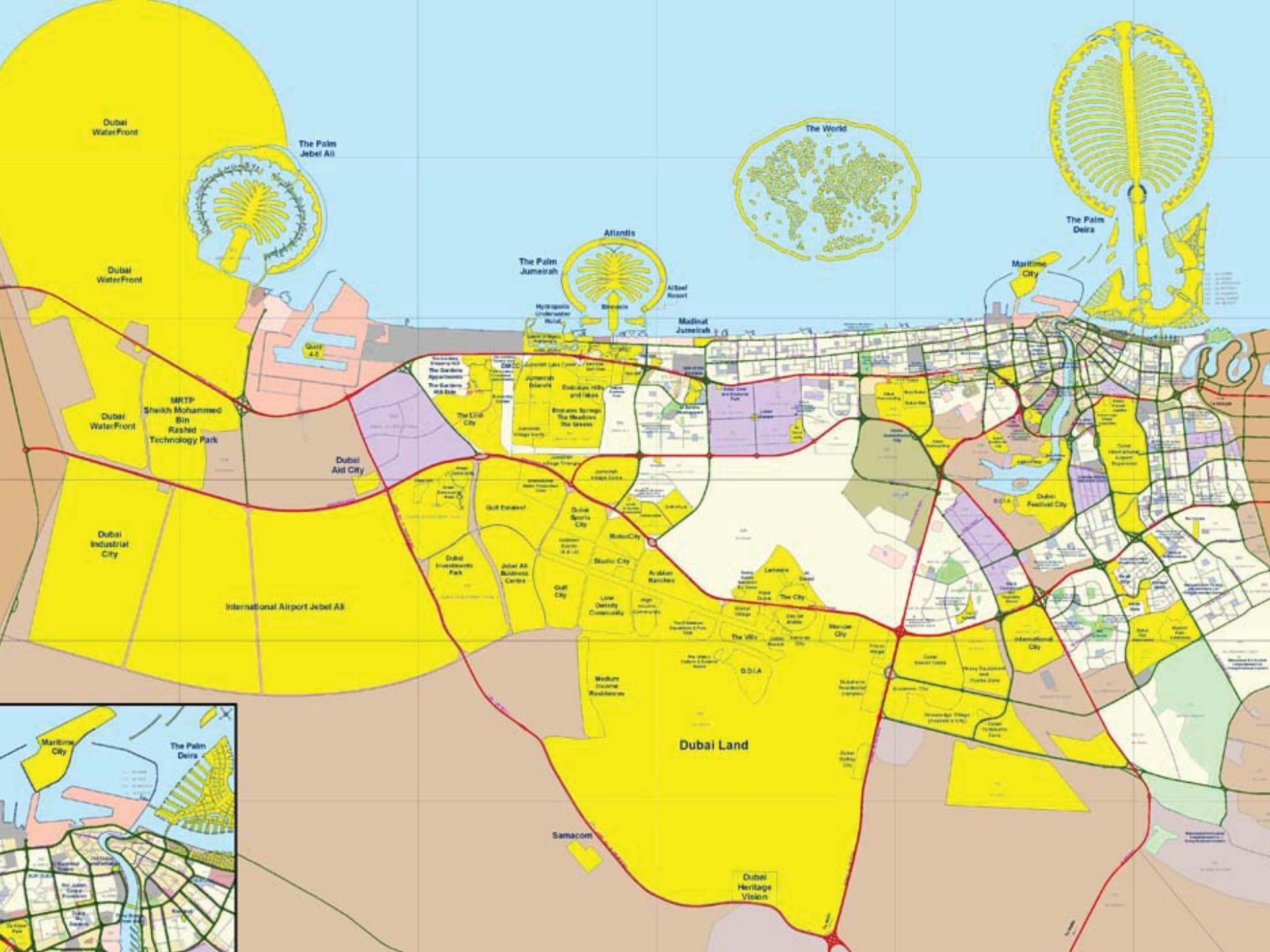
Population

1,600,000 (2008) – set to increase to 3.5 million by 2010

94 % expatriates – from over 200 nations

Arabic and English – Hindi, Urdu, and most European languages also widely used religion

Muslim, Hindu and Christian, various others





- 111 NO NAM
- 112 AL RAS
- 113 AL DHA
- 114 AL BUTE
- 115 AL SABI
- 116 AYAL N
- 117 AL MUR

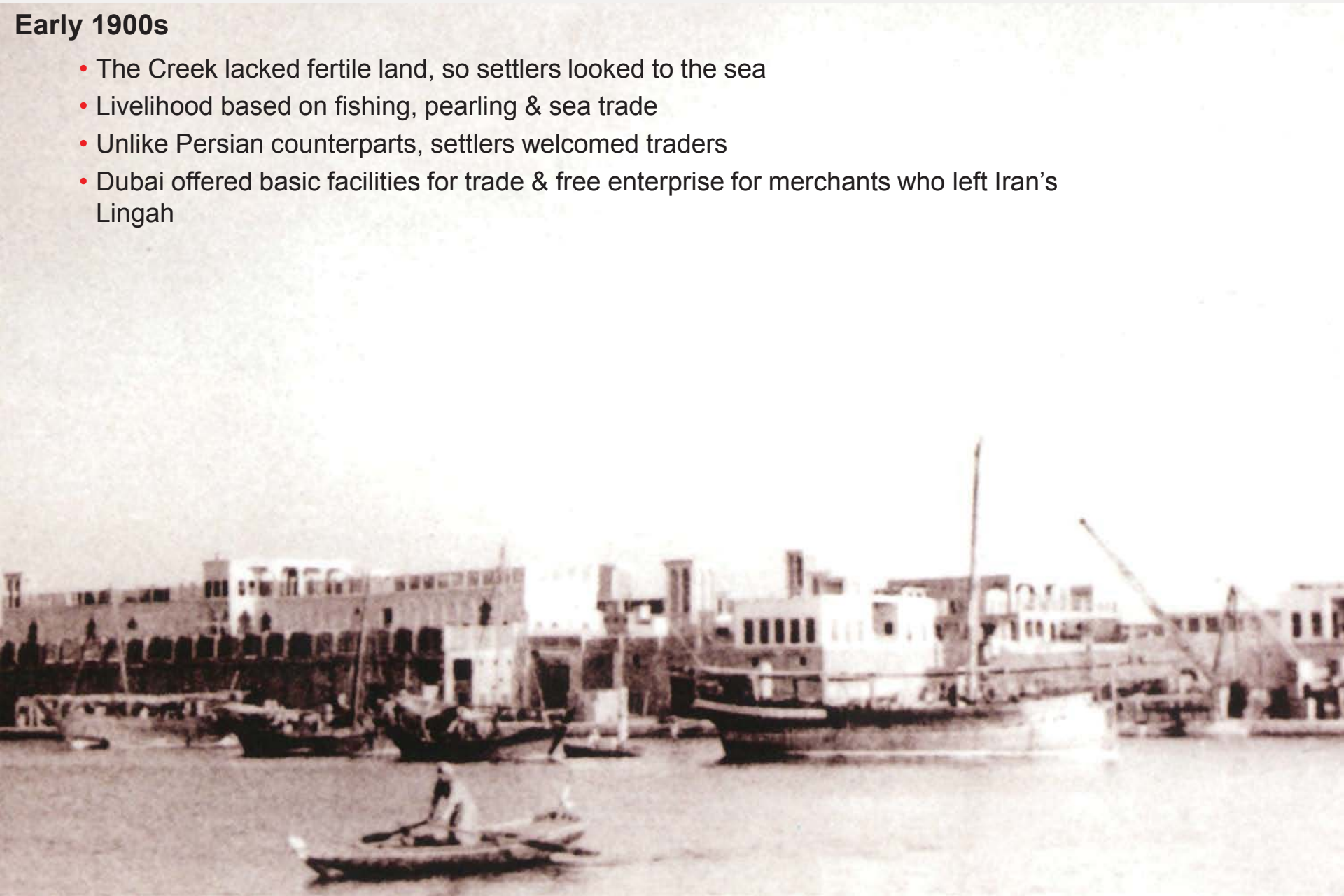
To Sharjah

The Schools

History

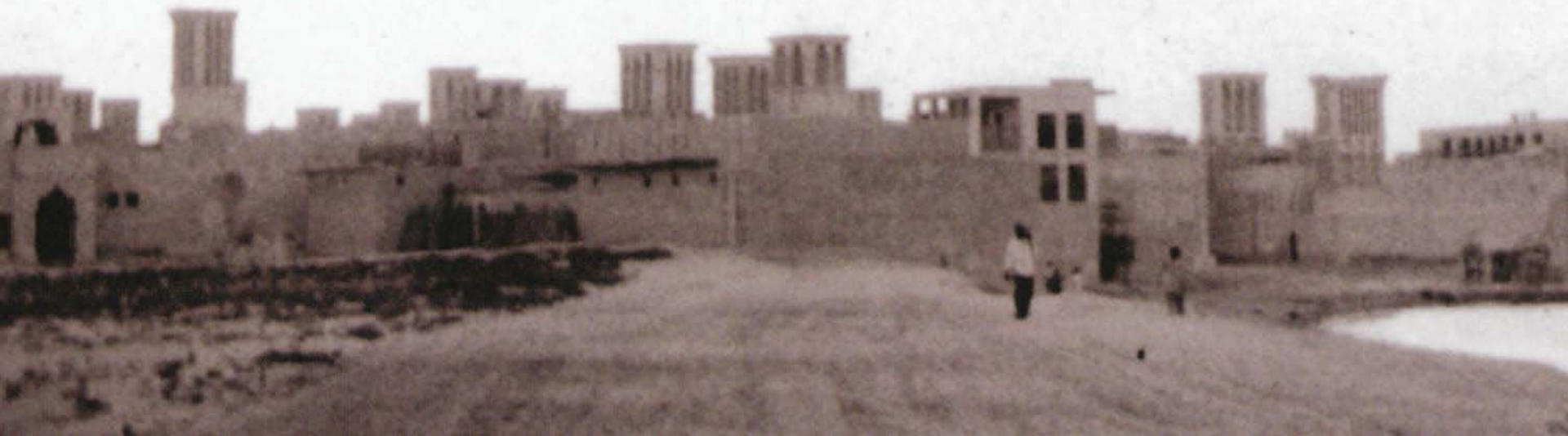
Early 1900s

- The Creek lacked fertile land, so settlers looked to the sea
- Livelihood based on fishing, pearling & sea trade
- Unlike Persian counterparts, settlers welcomed traders
- Dubai offered basic facilities for trade & free enterprise for merchants who left Iran's Lingah



1900 - 1920

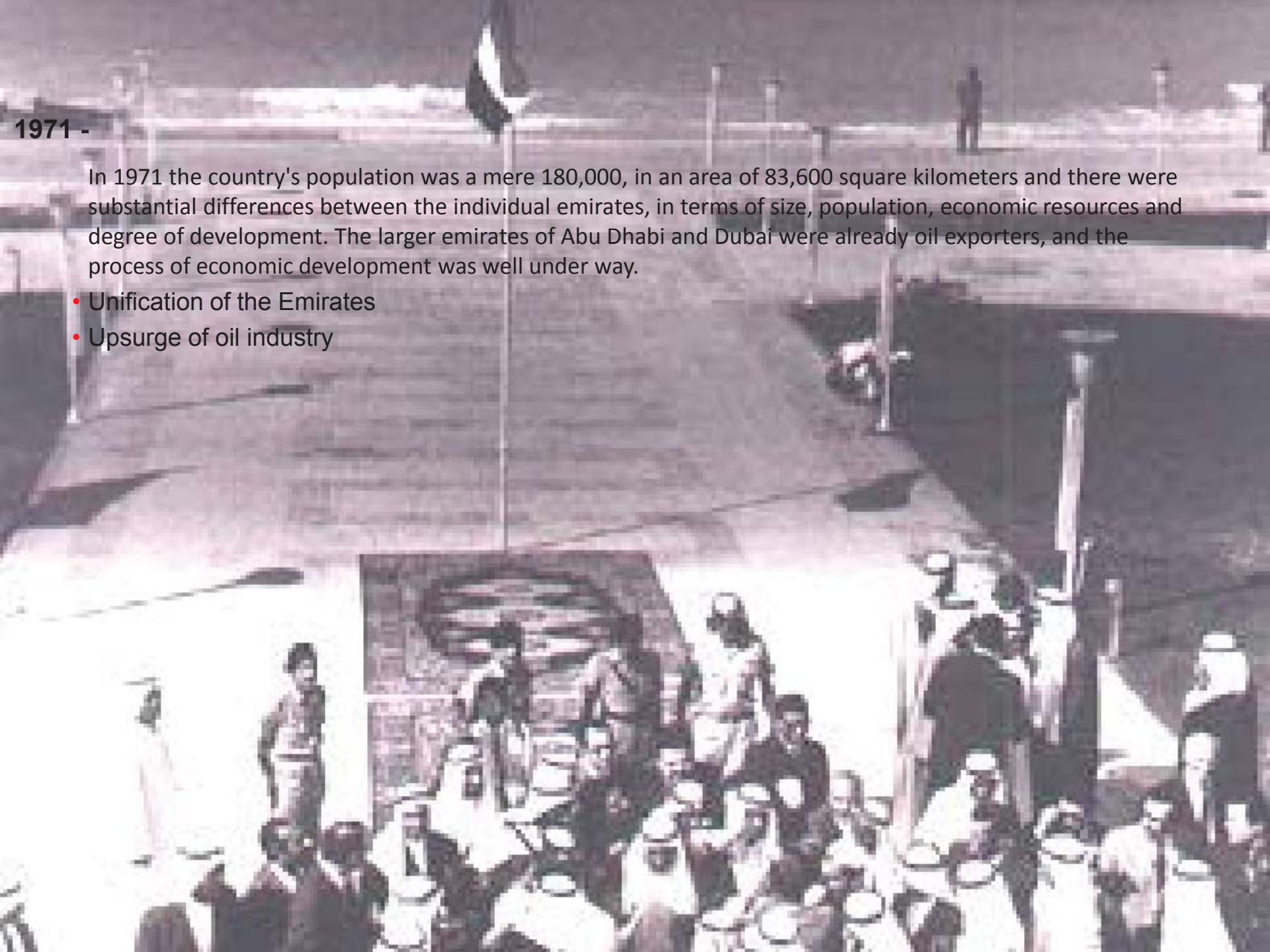
- By 20th century, Dubai achieved a level of prosperity to attract settlers from Iran, Baluchestan & India
- These settlers named their district Bastakiya (Bastak region in South Persia)
- A growing souq on Deira side was thought to be largest on the coast with 350 shops



1930s - 1980

- 1930s Dubai faced strong competition from Japanese cultured pearling industry
- International trade became the basis of rapidly increasing prosperity
- Dubai grew and developed due to inhabitants & entrepreneurial abilities, not oil
- Leadership was critical to Old Dubai's success

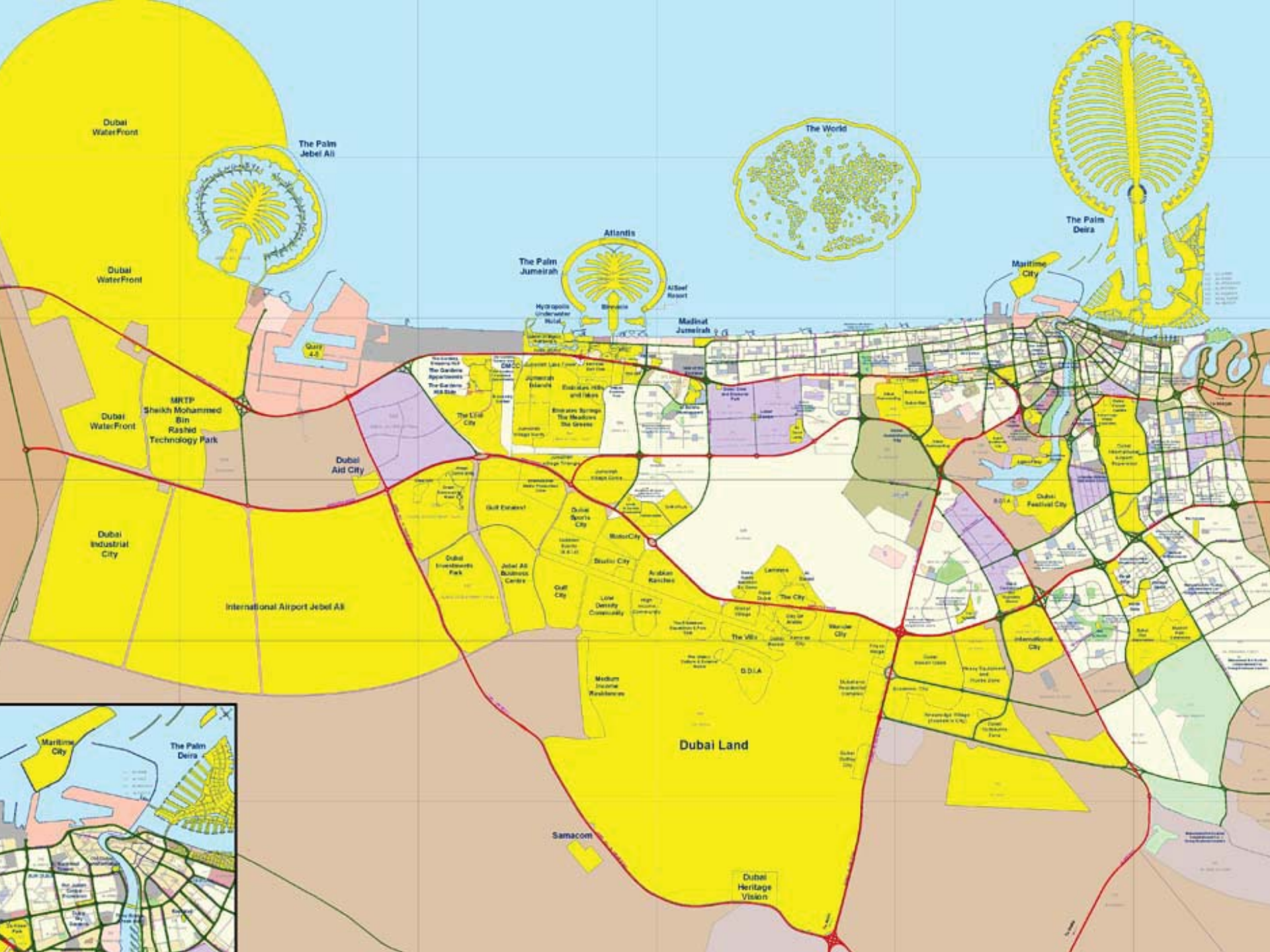




1971 -

In 1971 the country's population was a mere 180,000, in an area of 83,600 square kilometers and there were substantial differences between the individual emirates, in terms of size, population, economic resources and degree of development. The larger emirates of Abu Dhabi and Dubai were already oil exporters, and the process of economic development was well under way.

- Unification of the Emirates
- Upsurge of oil industry









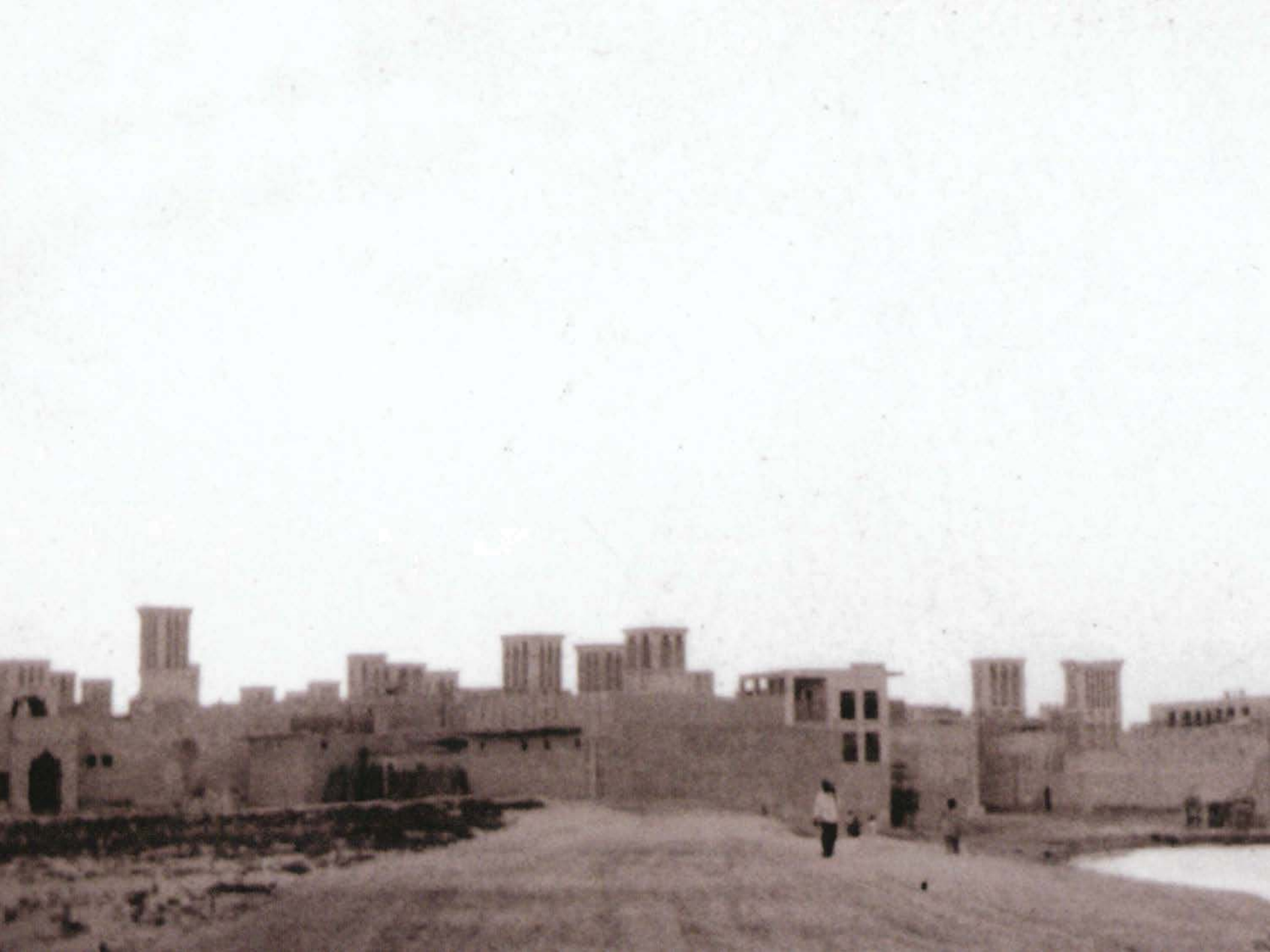




Image by Reineke Otten





Image by Reineke Otten

هيئة دبي للثقافة والفنون
Dubai Culture & Arts Authority







Dubai City & Dubai Creek



MAJOR PROJECTS MAP OF DUBAI

Contents : Admin Boundary, Major Project
Road Center Line
with Road Names

Legend :

| | | |
|--|------------------|-----------------------|
| | ADMIN BOUNDARY | الحدود الإدارية |
| | ROAD CENTER LINE | خطوط المراكز الرئيسية |
| | COMMUNITY NUMBER | رقم المنطقة |
| | AL-BAYD | سجلات المنطقة |
| | ROAD NAME | اسم الطريق |

Scale

860 430 0 860 Meters

تم إعداد هذه الخريطة بواسطة دائرة التخطيط والبنية التحتية في إمارة دبي
 04-2008
 أو الاتصال بالدائرة الإلكترونية gisupport@dm.gov.ae فاكس: 04-2064503
 أو الاتصال بالدائرة الهاتفية 04-2064503
 أو الاتصال بالدائرة الفاكس 04-2064503
 أو الاتصال بالدائرة الإلكترونية gisupport@dm.gov.ae فاكس: 04-2064503
 أو الاتصال بالدائرة الهاتفية 04-2064503
 أو الاتصال بالدائرة الفاكس 04-2064503

Please contact us in case of any questions/suggestions:
 GIS Center Ph: 04-2064503 or
 email: gisupport@dm.gov.ae, Fax: 04-2064503

Disclaimer : This Map belongs to Dubai Municipality
 GIS DEPARTMENT. Copying, distributing or providing the
 map contents to a third party in whole or in parts without
 the prior permission of Dubai Municipality is strictly
 prohibited. Copyright © 2008. DUBAI GIS DEPARTMENT.
 All rights reserved.



1950



2008

Khor Dubai (Dubai Creek)

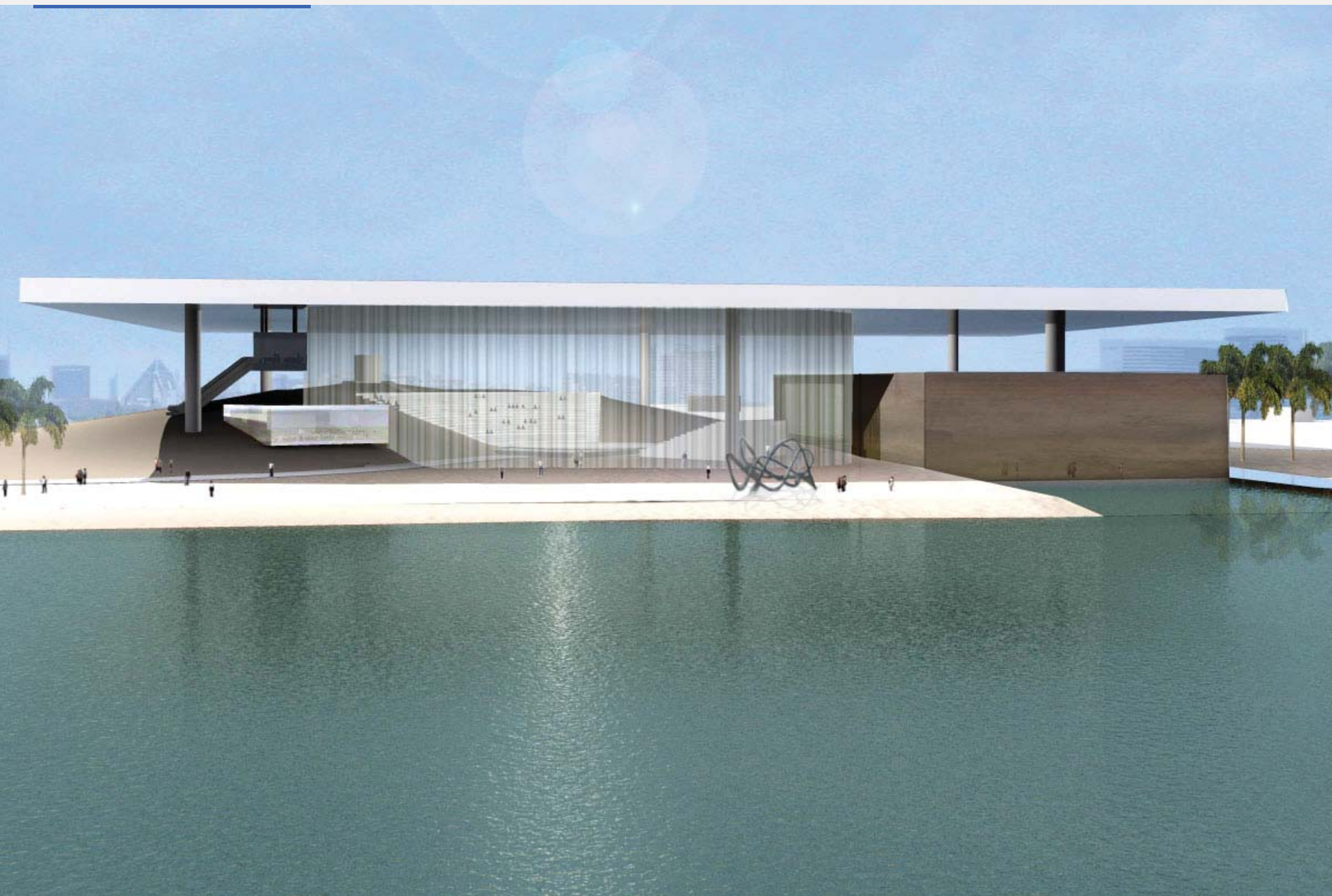
The “Khor Dubai” cultural project stretching over 20 kilometers, will commence at Shindagha, Dubai’s oldest neighborhood at the mouth of Dubai Creek, and stretching to Business Bay, Dubai’s newest commercial district.

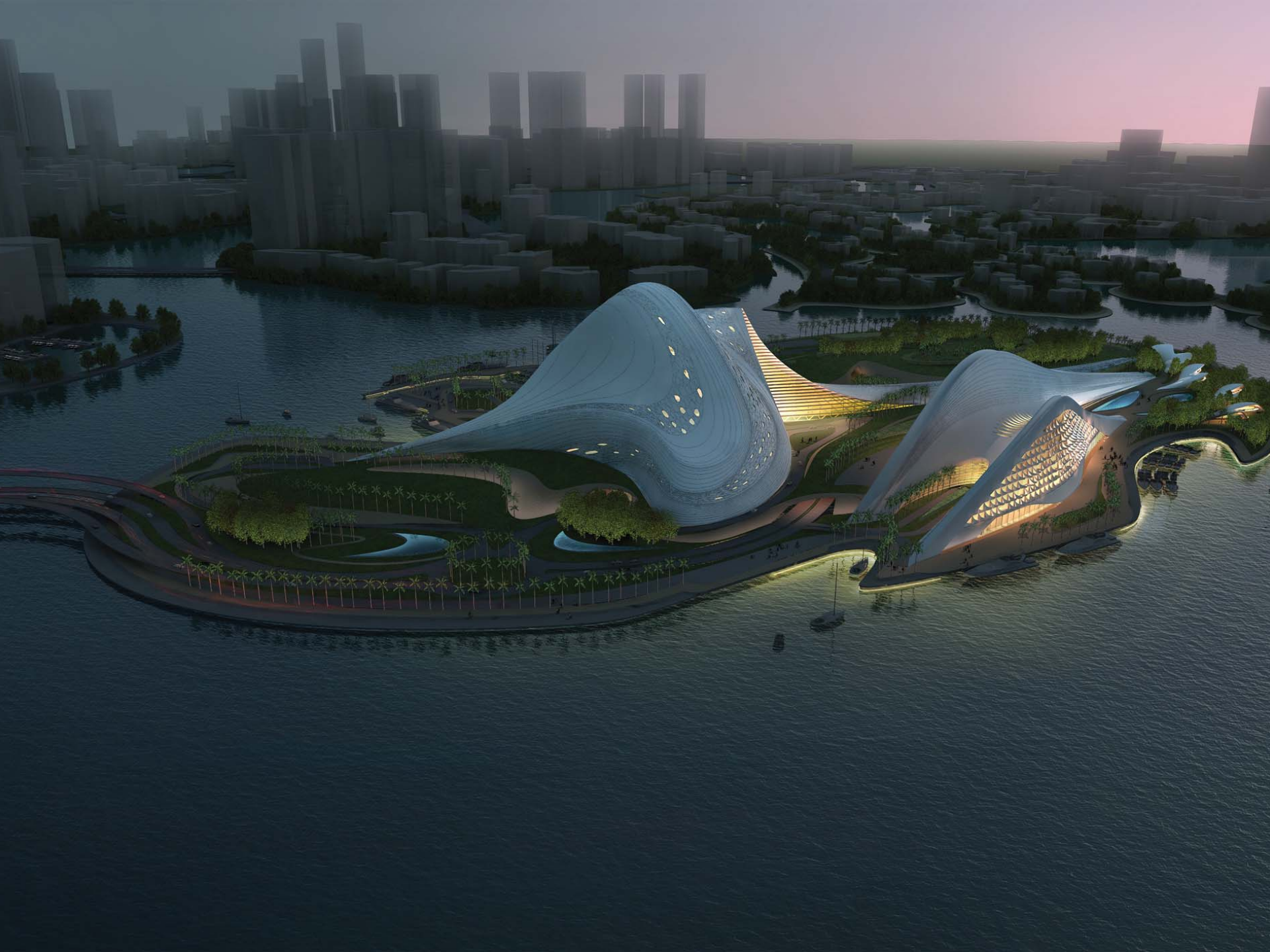
Dubai Creek will be the vibrant destination for culture, arts and heritage in the city.



Creek Park Performing Arts Pavilion

OMA / Rem Koolhaas



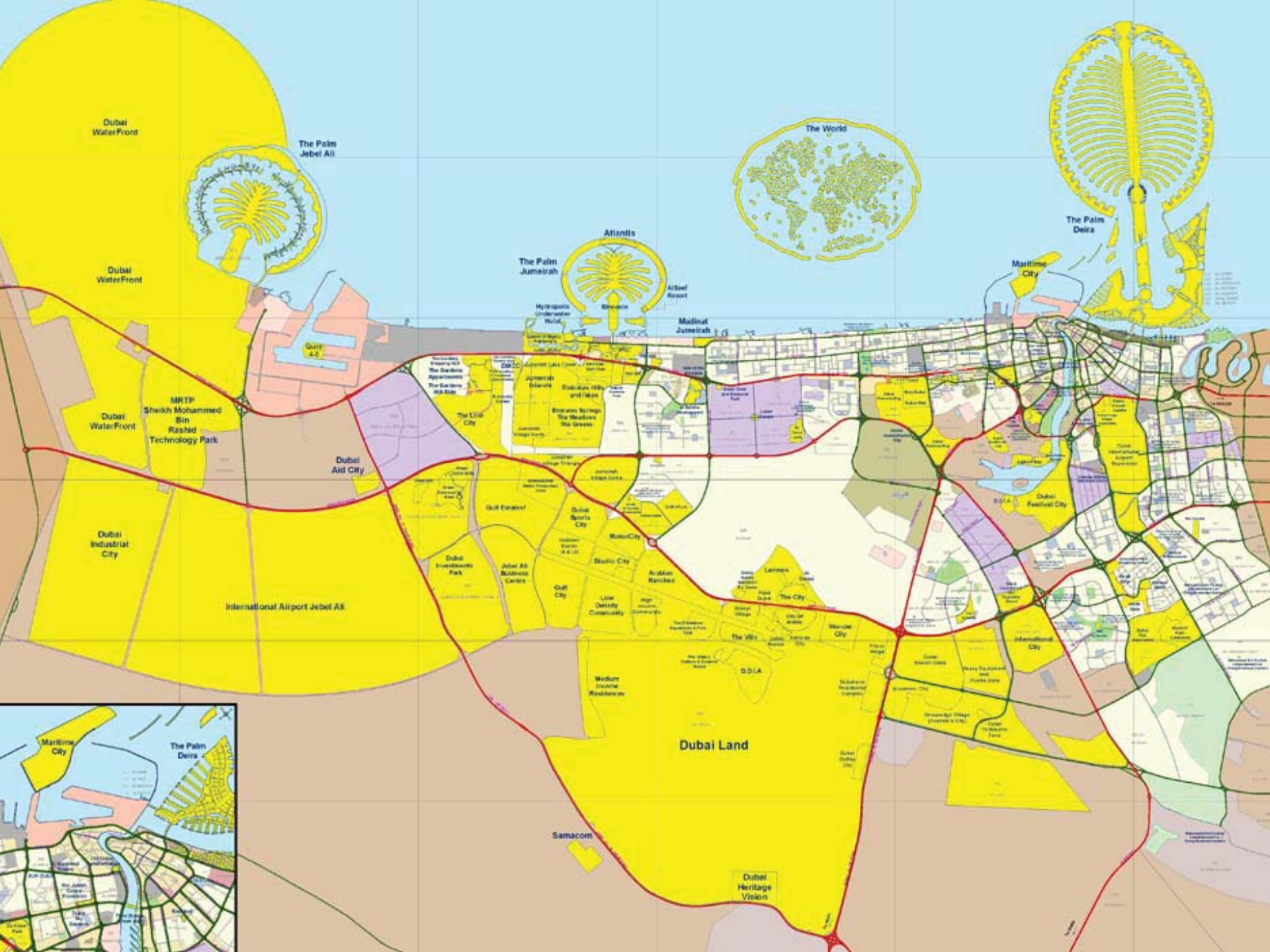




The Universal Museums

Platform of cultural plurality









INTERTECH
مركز التكنولوجيا
INTERTECH

INTERTECH CO. LLC
INTERTECH
مركز التكنولوجيا
INTERTECH

ART GALLERY

ART GALLERY
مركز التكنولوجيا
INTERTECH

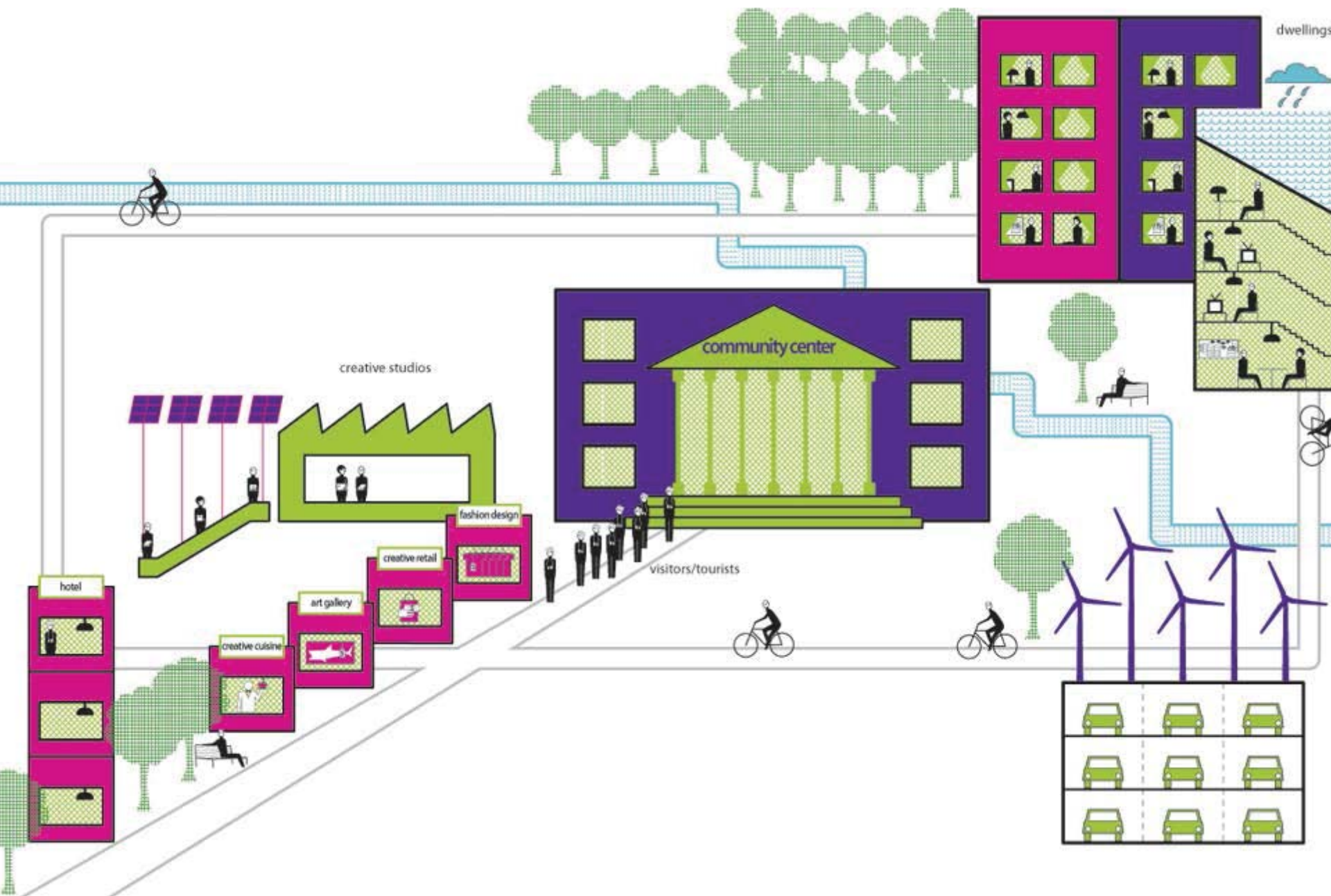


817

reborn LONDON
مركز التكنولوجيا
INTERTECH

irony home
S.M.S.







12カ月の動き

ハンセン指数 14796.87 -1146.37

上海B株





GDP 2009 (estimated) \$201bn
(Oil accounts for 3 % of GDP)

**Previous GDP growth targets of
11% tamed down to – 4 %**

Gross External Debt \$ 129 bn
(at 1.3 % of gross domestic product)

government spending 2009 \$ 22.3 bn
(from \$ 7.2 bn in 2008)

**Dubai ruled out new taxes, introduced
salik**

















Prepaid Card is in.

www.rakbank.ae

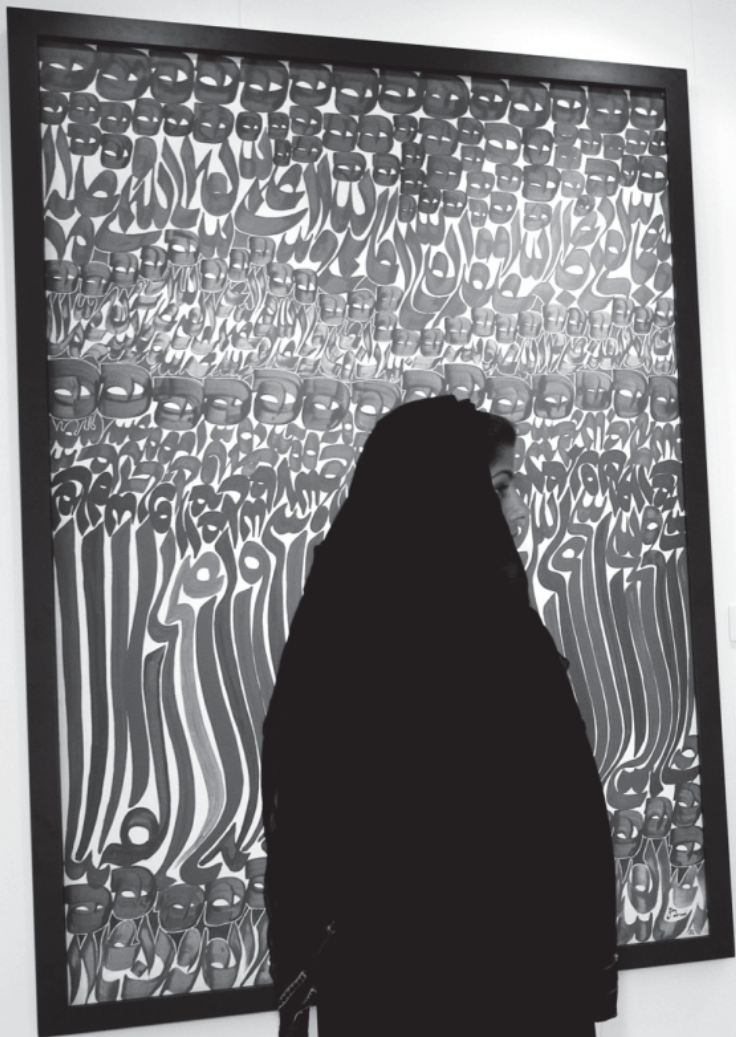
RAKBANK





ART DUBAI

18-21.03.2015















LILIANE KARMOUK
Modern Egyptian Art
1918-2003

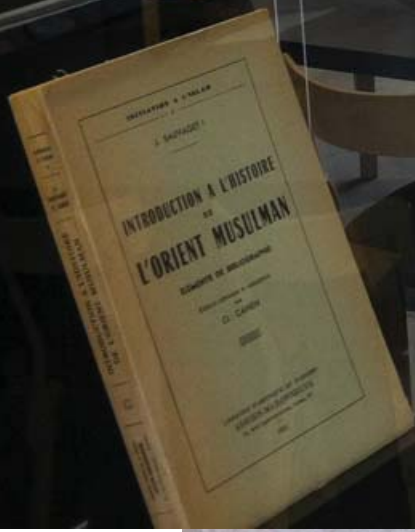
ABDELKÉ

CONTEMPORARY ART IN THE MIDDLE EAST

Christians
in Persia
ROBIN E. WATERFIELD
GEORGE ALLEN & UNWIN

UNDERSTANDING
ISLAM
FRIEDRICH SCHÖN
A BOKUNEN

Forces of Change
Artists of the Arab World





CATWALK SHOWS
HEAD FOR SIZE ZERO
BY JENNIFER 9.40

DEFLATION
GRIPS CHINA
ECONOMY
INTERNATIONAL 8.14

BUSINESS

Heilbronn

Merger to create new mega-bank

LENDER WILL HAVE DRIOB IN CAPITAL
MORTGAGES
Committee
Completes m

